

Creating Databases and Installing MasterScripts



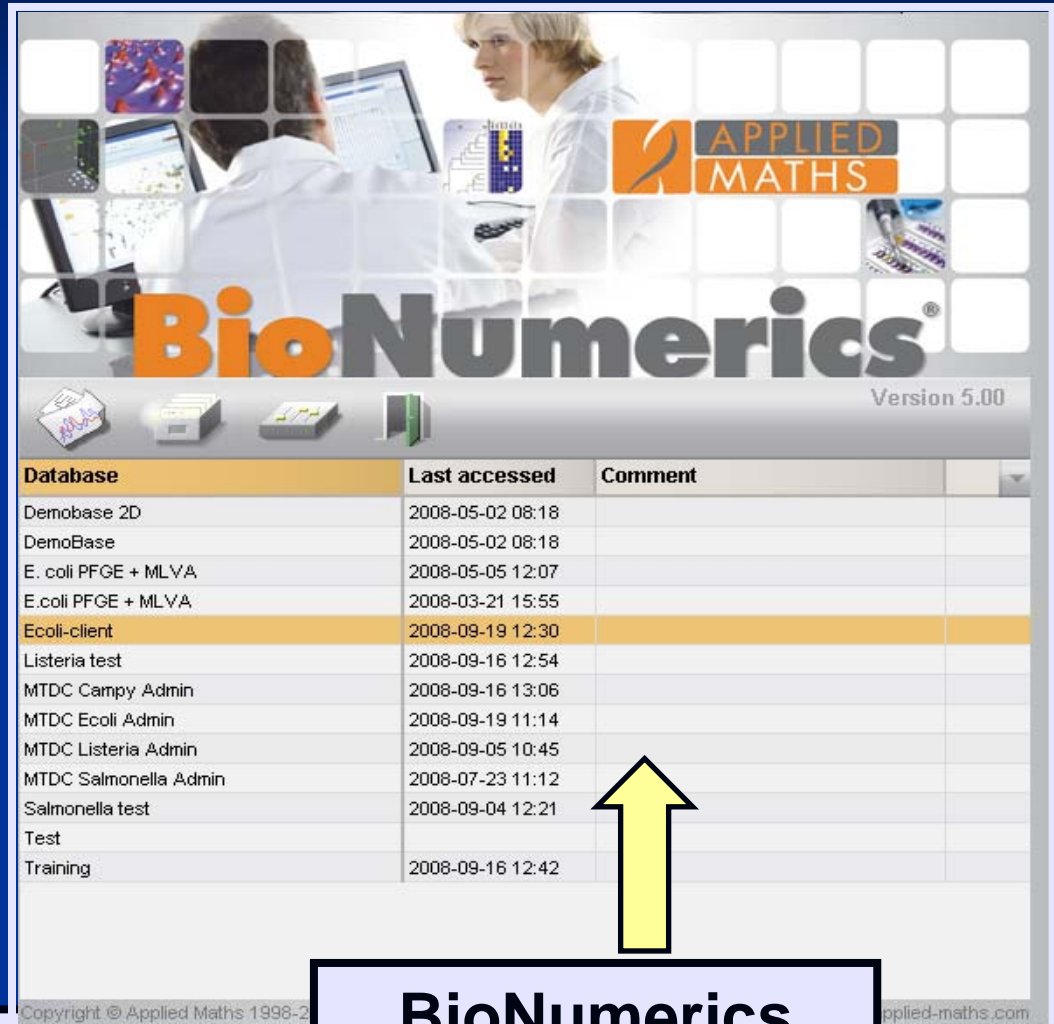
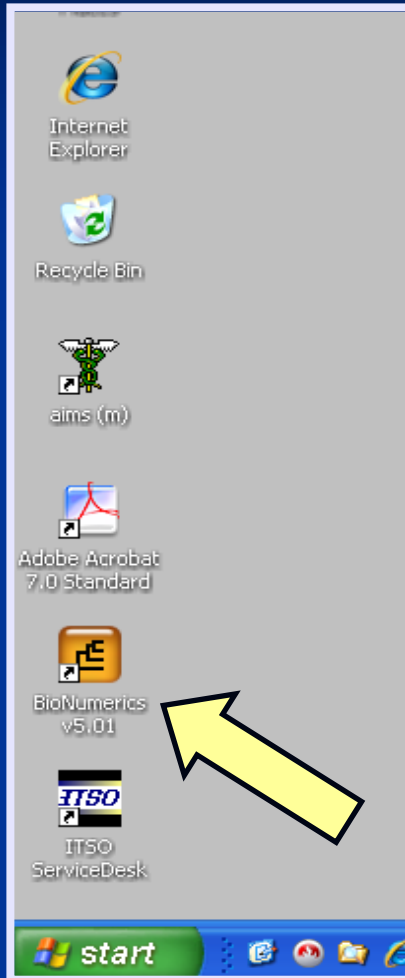
Molly Leeper
May 2009



Overview

- Create a New PulseNet Database
- Install PulseNet MasterScripts

Create a New PulseNet Database



Double click on the BioNumerics shortcut

BioNumerics
Startup Screen

Create a New PulseNet Database

Click “Create new database” to set up a new database

Version 5.00

Database	Create new database	Last accessed	Comment
Demobase 2D		2008-05-02 08:18	
DemoBase		2008-05-02 08:18	
E. coli PFGE + MLV		2008-05-05 12:07	
E.coli PFGE + MLV		2008-03-21 15:55	
Ecoli-client		2008-09-19 12:30	
Listeria test		2008-09-16 12:54	
MTDC Campy Admin		2008-09-16 13:06	
MTDC Ecoli Admin		2008-09-19 11:14	
MTDC Listeria Admin		2008-09-05 10:45	
MTDC Salmonella Ad		2008-07-23 11:12	
Salmonella test		2008-09-04 12:21	
Test			
Training		2008-09-16 12:42	

Copyright © Applied Maths 1998-2007 www.applied-maths.com

Create a New PulseNet Database

Type in the name
for your new
database: Ecoli

New database

This wizard will help you create a new database. Fill in a name for the database and click Next.

Database name:

Ecoli

< Back Next > Cancel

Click "Next"

Create a New PulseNet Database

- Select the default directory

- Keep the default at “Yes”

New database

The database will be installed in the following directory. You can enter another location if you want. Press 'Browse' if you want to specify a different, existing location.

Database directory:

Do you want to automatically create the required directories?

Yes (recommended)
 No

Click “Next”

Create a New PulseNet Database

Change to "Yes"

New database

Do you want to enable the creation of log files?

Yes
 No

If you select "Yes", the system will automatically write the history of each database component in a log file.

< Back Finish Cancel

Click "Finish"

Create a New PulseNet Database

Change to
“Local database”



Setup new database

Database type:

- New connected database (automatically created)
- New connected database (custom created)
- Existing connected database
- Local database (single user only)

ODBC connection string: Build...

Database type

- Access®
- SQL Server®
- Oracle®

Store fingerprints in database

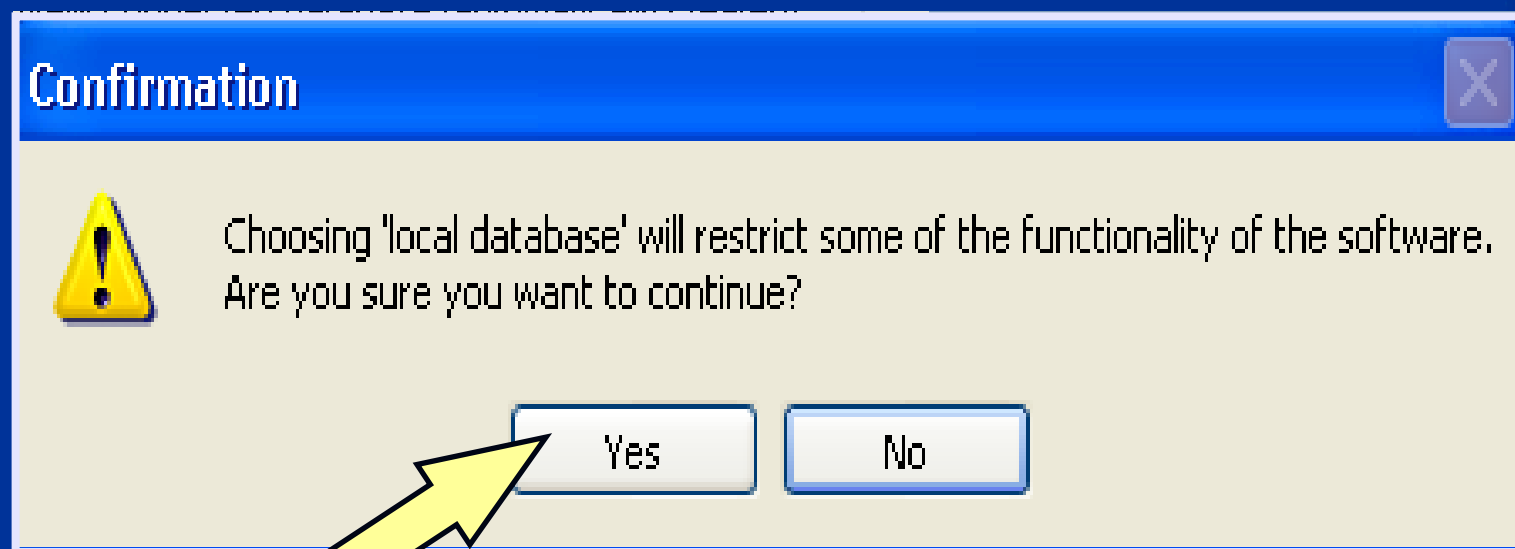
Proceed



Click “Proceed”

Create a New PulseNet Database

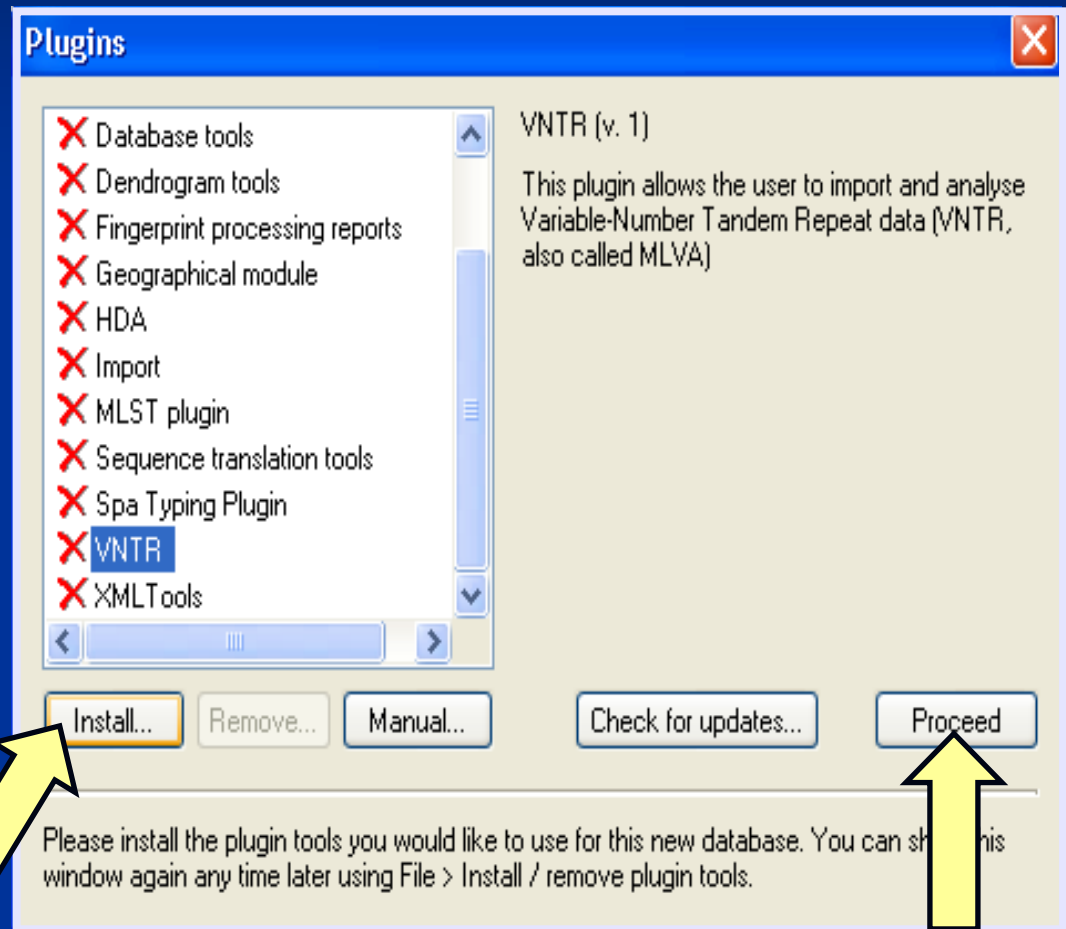
When you choose “Local database,” a confirmation window will appear. Click “yes” to continue



Create a New PulseNet Database

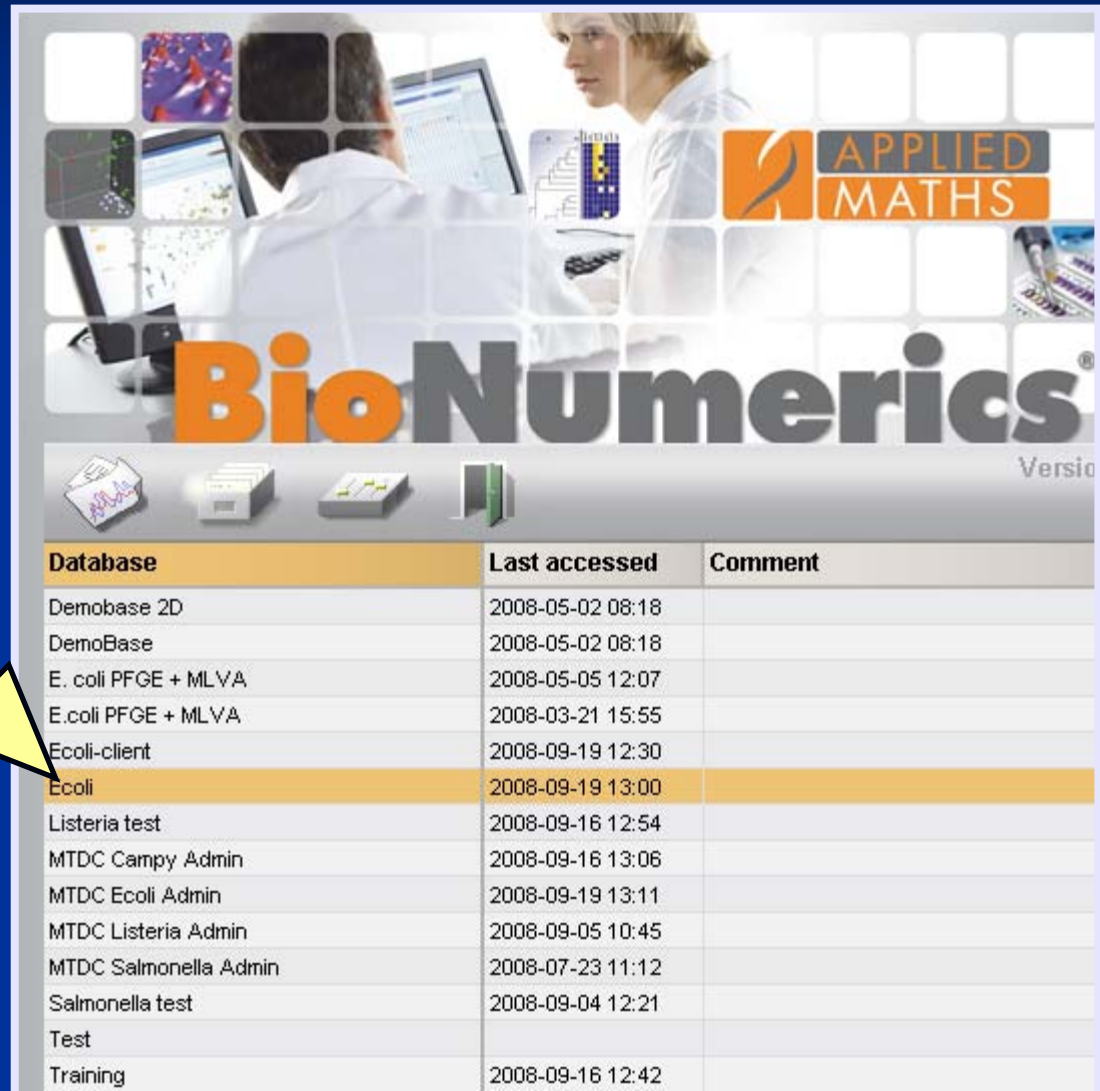
Plug-ins offer additional functionality, such as importing and exporting various types of data

Choose which Plug-ins you would like to use, and click “Install,” then “Proceed”



Create a New PulseNet Database

Note that your newly created database is present



The screenshot displays the BioNumerics software interface. At the top, there is a header with the 'APPLIED MATHS' logo and the 'BioNumerics' brand name. Below the header, there is a navigation bar with several icons. The main content area is a table listing various databases. The 'Ecoli' database is highlighted in yellow, indicating it is the newly created database mentioned in the text box. The table has three columns: 'Database', 'Last accessed', and 'Comment'.

Database	Last accessed	Comment
Demobase 2D	2008-05-02 08:18	
DemoBase	2008-05-02 08:18	
E. coli PFGE + MLVA	2008-05-05 12:07	
E.coli PFGE + MLVA	2008-03-21 15:55	
Ecoli-client	2008-09-19 12:30	
Ecoli	2008-09-19 13:00	
Listeria test	2008-09-16 12:54	
MTDC Campy Admin	2008-09-16 13:06	
MTDC Ecoli Admin	2008-09-19 13:11	
MTDC Listeria Admin	2008-09-05 10:45	
MTDC Salmonella Admin	2008-07-23 11:12	
Salmonella test	2008-09-04 12:21	
Test		
Training	2008-09-16 12:42	

Overview

- Create a New PulseNet Database
- Install PulseNet MasterScripts

Install PulseNet MasterScripts

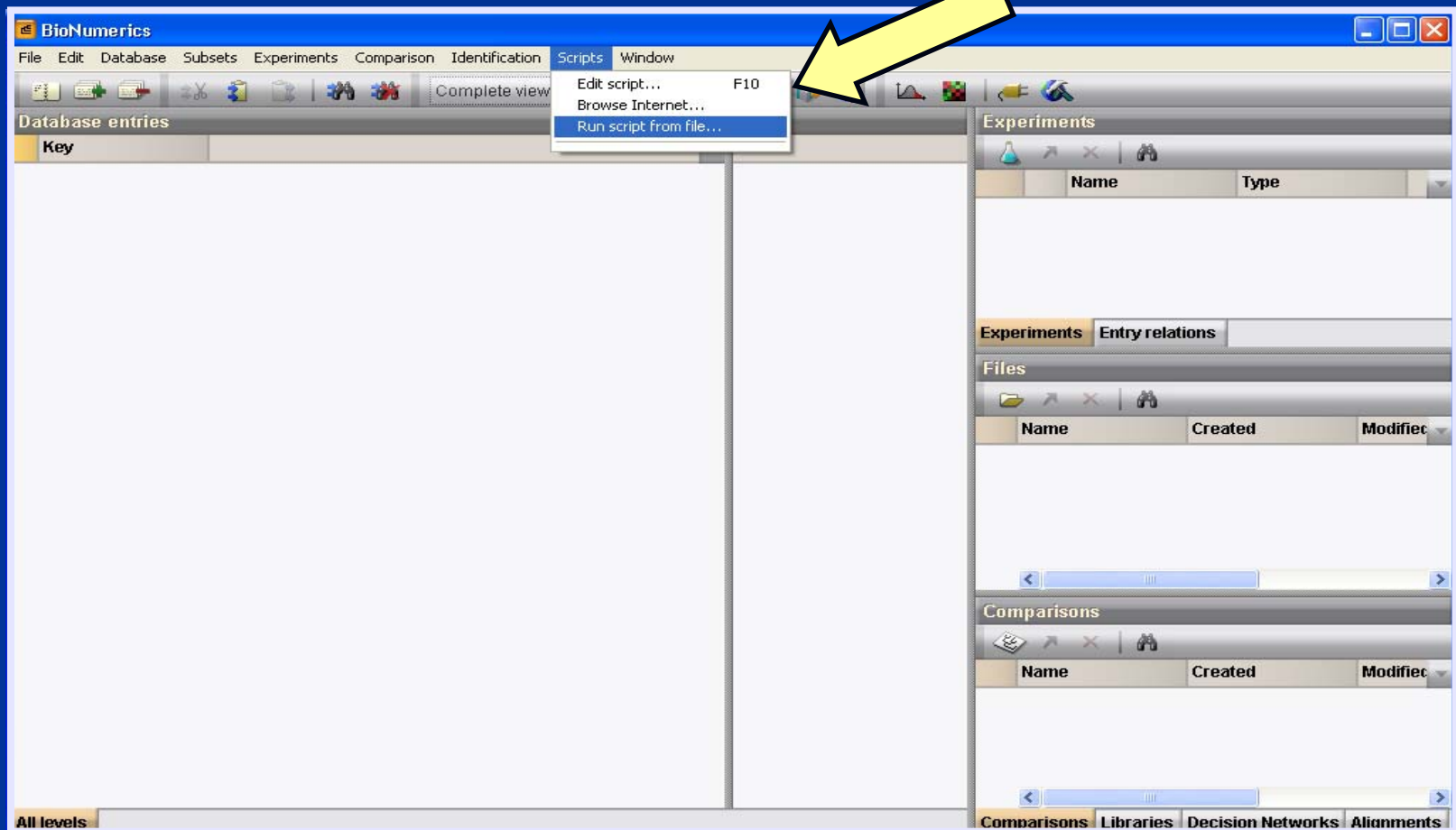
Either Double-click on your newly created database or click “Open database for analysis”

Version 5.00

Open database for analysis	Last accessed	Comment
Demobase 2D	2008-05-02 08:18	
DemoBase	2008-05-02 08:18	
E. coli PFGE + MLVA	2008-05-05 12:07	
E.coli PFGE + MLVA	2008-03-21 15:55	
Ecoli-client	2008-09-19 12:30	
Ecoli	2008-09-19 13:23	
Listeria test	2008-09-16 12:54	
MTDC Campy Admin	2008-09-16 13:06	
MTDC Ecoli Admin	2008-09-19 13:11	
MTDC Listeria Admin	2008-09-05 10:45	
MTDC Salmonella Admin	2008-07-23 11:12	
Salmonella test	2008-09-04 12:21	
Test		
Training	2008-09-16 12:42	

Install PulseNet MasterScripts

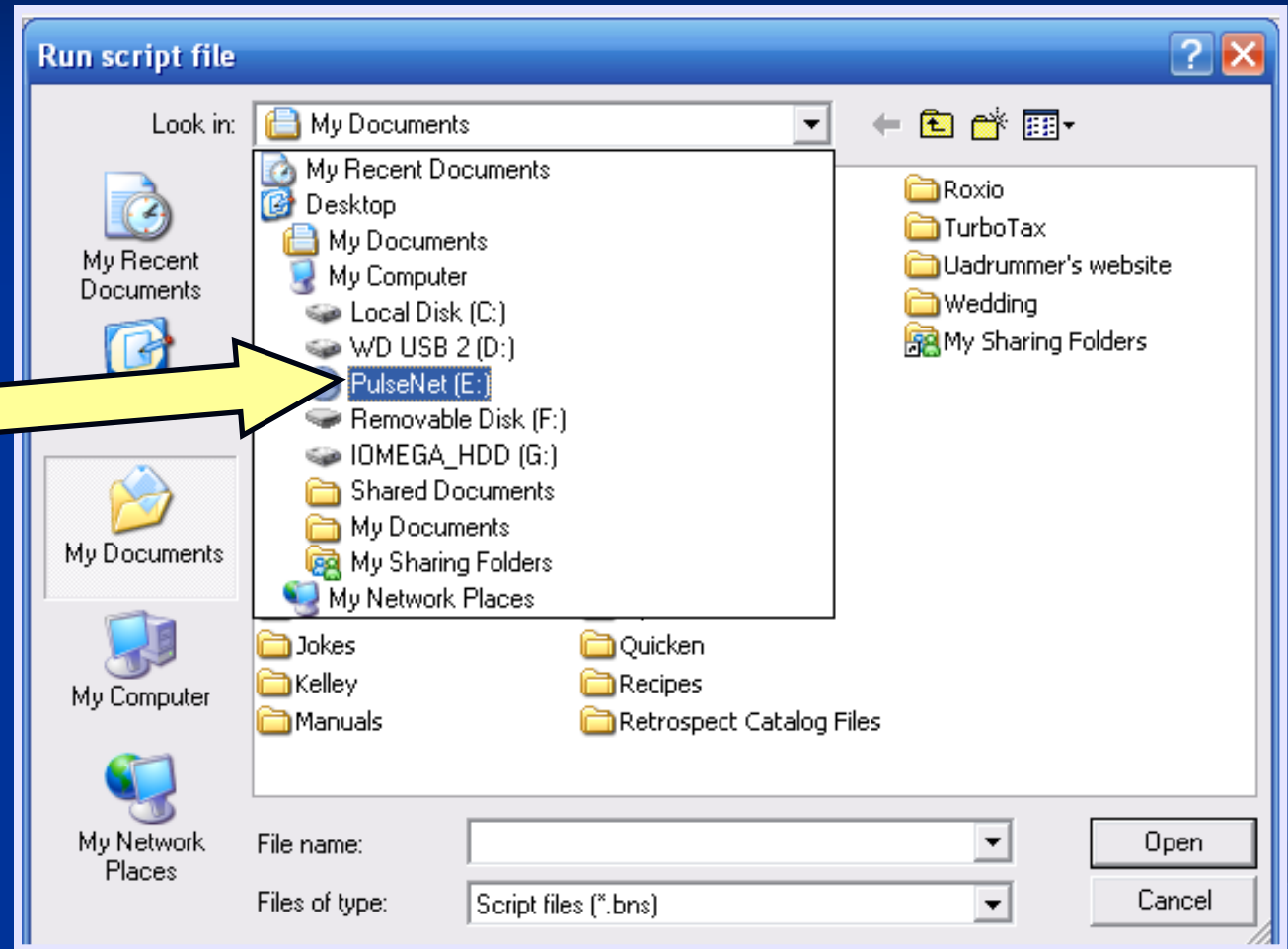
In the upper toolbar click “Scripts” and select “Run script from file...”



The screenshot displays the BioNumerics software interface. The menu bar includes File, Edit, Database, Subsets, Experiments, Comparison, Identification, Scripts, and Window. The Scripts menu is open, showing options: Edit script... (F10), Browse Internet..., and Run script from file... (highlighted). A yellow arrow points to the Scripts menu. The interface also shows a toolbar with icons for various functions, and several panels on the right side: Experiments, Files, Comparisons, and Libraries. The Experiments panel has columns for Name and Type. The Files panel has columns for Name, Created, and Modified. The Comparisons panel has columns for Name, Created, and Modified. The Libraries panel has columns for Name, Created, and Modified. The bottom status bar shows 'All levels' and 'Comparisons Libraries Decision Networks Alignments'.

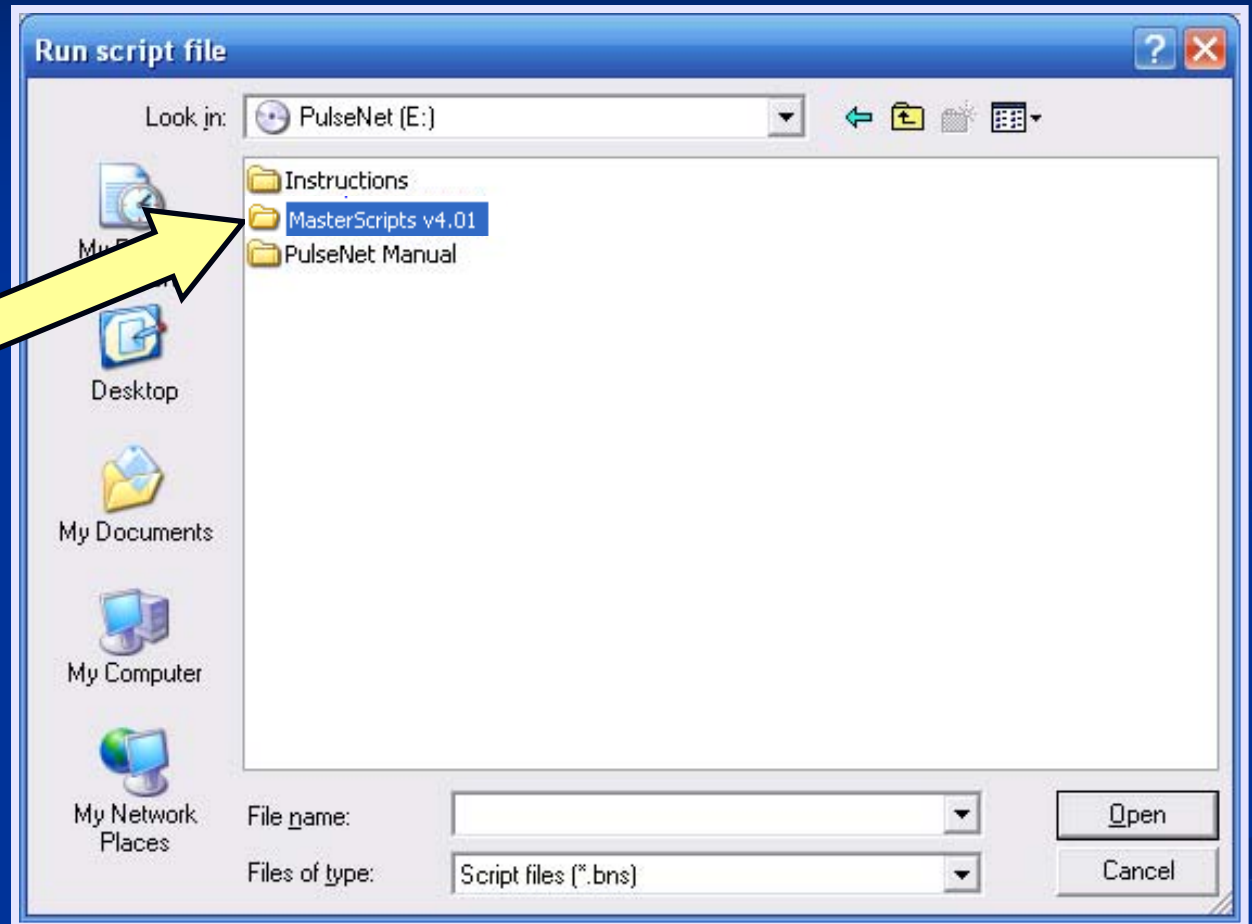
Install PulseNet MasterScripts

**Navigate to
the provided
BioNumerics
CD**



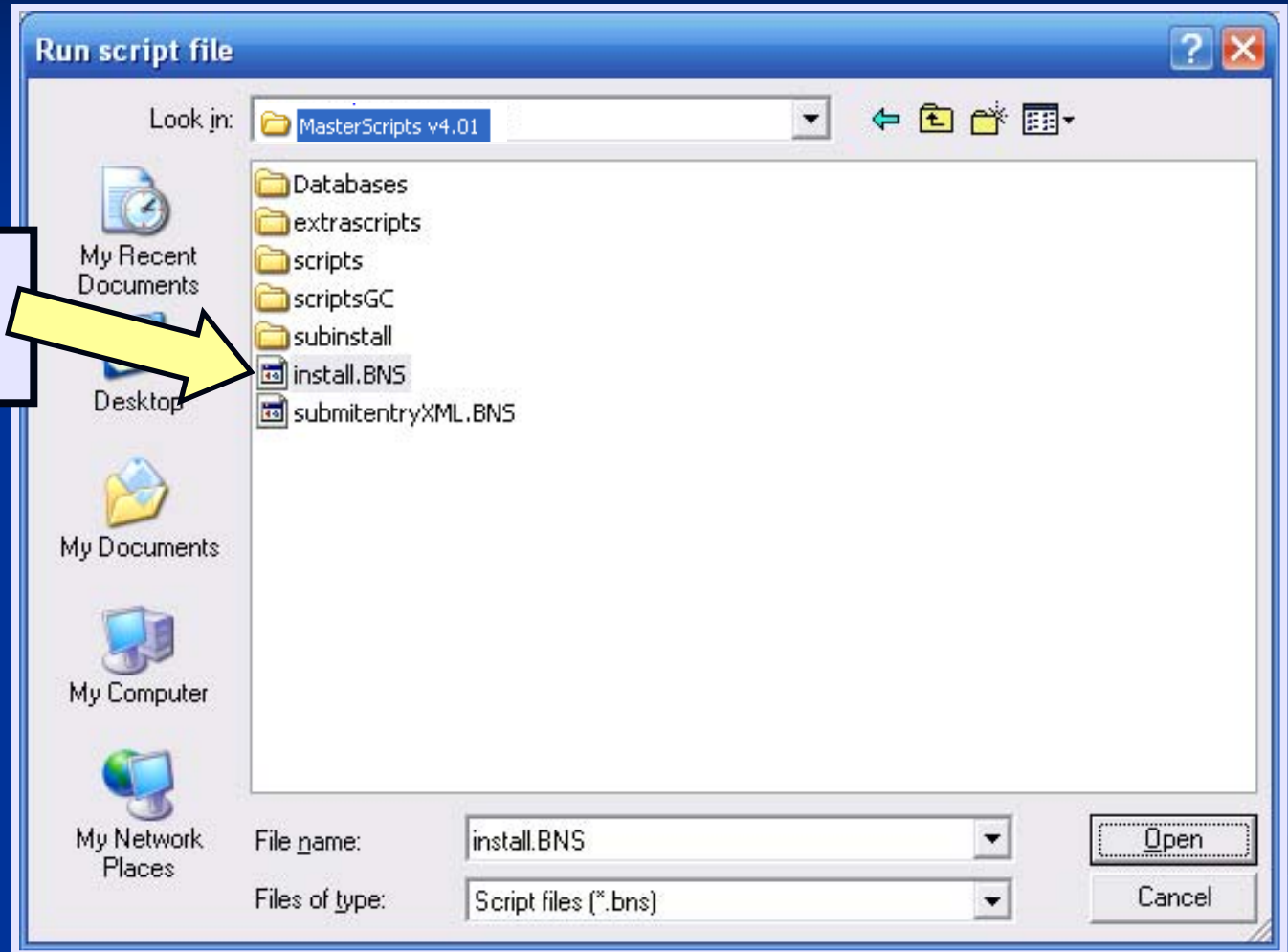
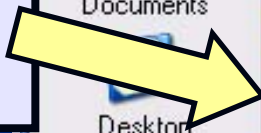
Install PulseNet MasterScripts

**Double-click
'MasterScripts
v4.01' folder
on the CD**



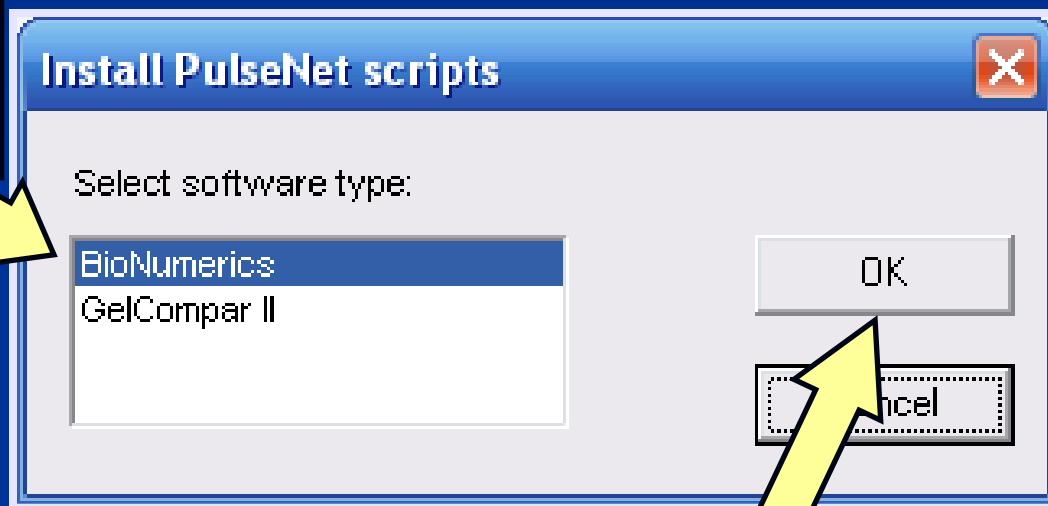
Install PulseNet MasterScripts

Double click
“install.bns”



Install PulseNet MasterScripts

Leave default at
BioNumerics



Click "OK"

Install PulseNet MasterScripts

Select Organism

Enter your Lab ID:

- For training, use LabID provided in class

Install PulseNet scripts

This script will install the pre-defined experiments and scripts for a PulseNet database

Select the organism:

- Ecoli
- Salmonella
- Listeria
- Shigella
- Campylobacter
- Ypestis
- Vcholerae

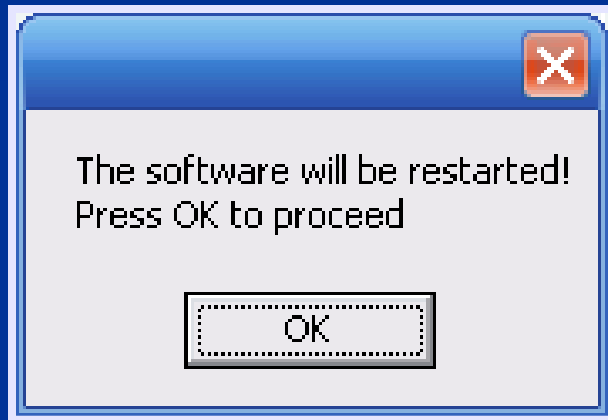
Enter the Lab ID for your site (if you don't know this, you can contact the PulseNet administration team)

CDC

OK

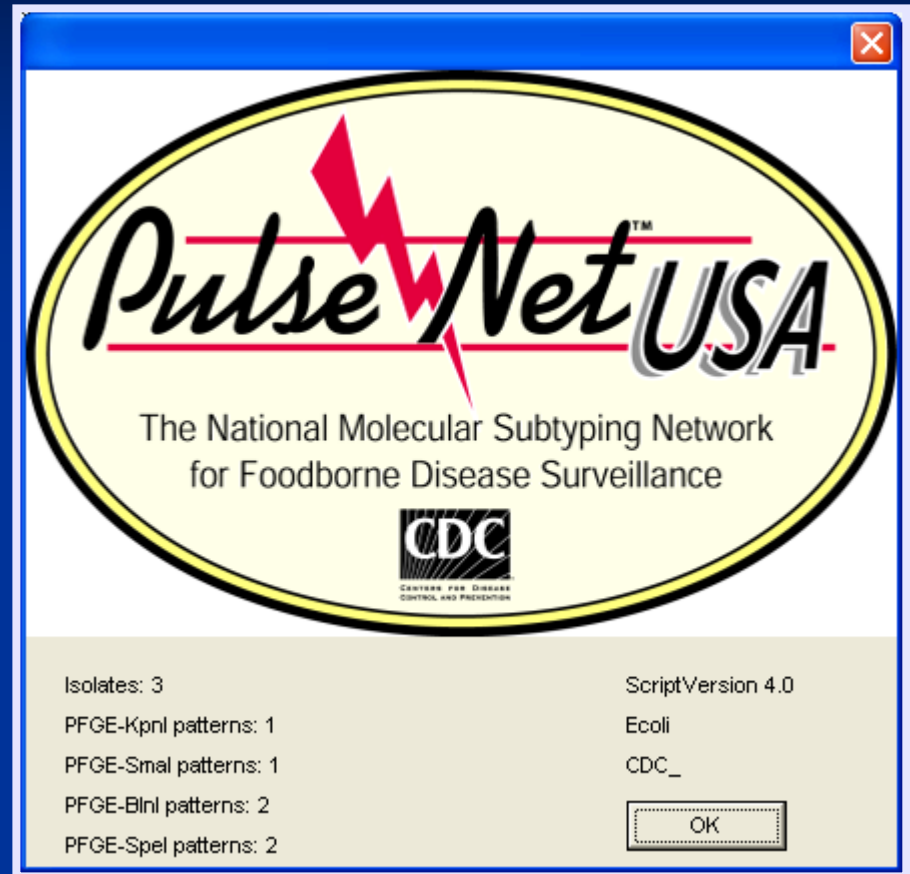
Cancel

Install PulseNet MasterScripts



The program will ask to be restarted, click OK.

Installation is complete!



You are at the start up screen of your new database.

Create Additional Databases/Install PulseNet MasterScripts

Please do the following:

- Create an *E. coli* database (Name database with initials at end. Ex: Ecoli-ML) and a *Listeria* database
- Install PulseNet MasterScripts in the *E. coli* and *Listeria* databases
- Turn on/off fields (index, location) in each database

Summary

- Created a New PulseNet Database
- Installed PulseNet MasterScripts

Questions?



Thank you for your attention

The findings and conclusions in this presentation are those of the author and do not necessarily represent the views of the Centers for Disease Control and Prevention