

# Creating Databases and Installing MasterScripts

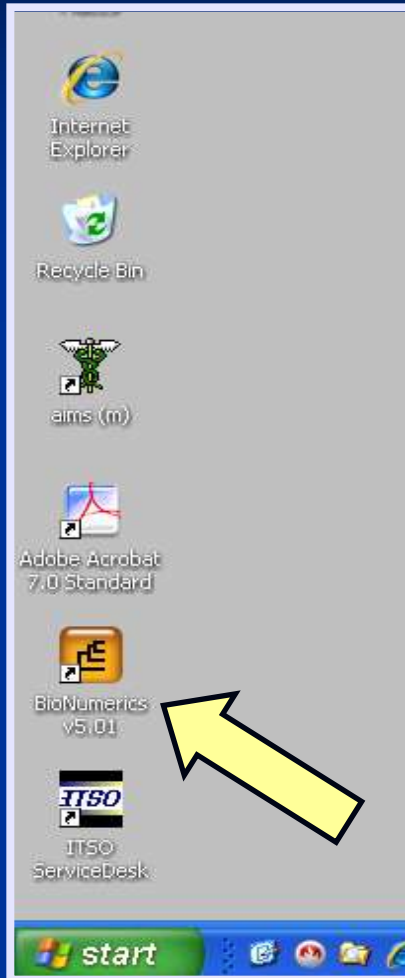


Lisa Theobald

April 2011



# Create a New PulseNet Database



APPLIED MATHS  
BioNumerics®  
Version 5.00

Database	Last accessed	Comment
Demobase 2D	2008-05-02 08:18	
DemoBase	2008-05-02 08:18	
E. coli PFGE + MLVA	2008-05-05 12:07	
E.coli PFGE + MLVA	2008-03-21 15:55	
<b>Ecoli-client</b>	<b>2008-09-19 12:30</b>	
Listeria test	2008-09-16 12:54	
MTDC Campy Admin	2008-09-16 13:06	
MTDC Ecoli Admin	2008-09-19 11:14	
MTDC Listeria Admin	2008-09-05 10:45	
MTDC Salmonella Admin	2008-07-23 11:12	
Salmonella test	2008-09-04 12:21	
Test		
Training	2008-09-16 12:42	

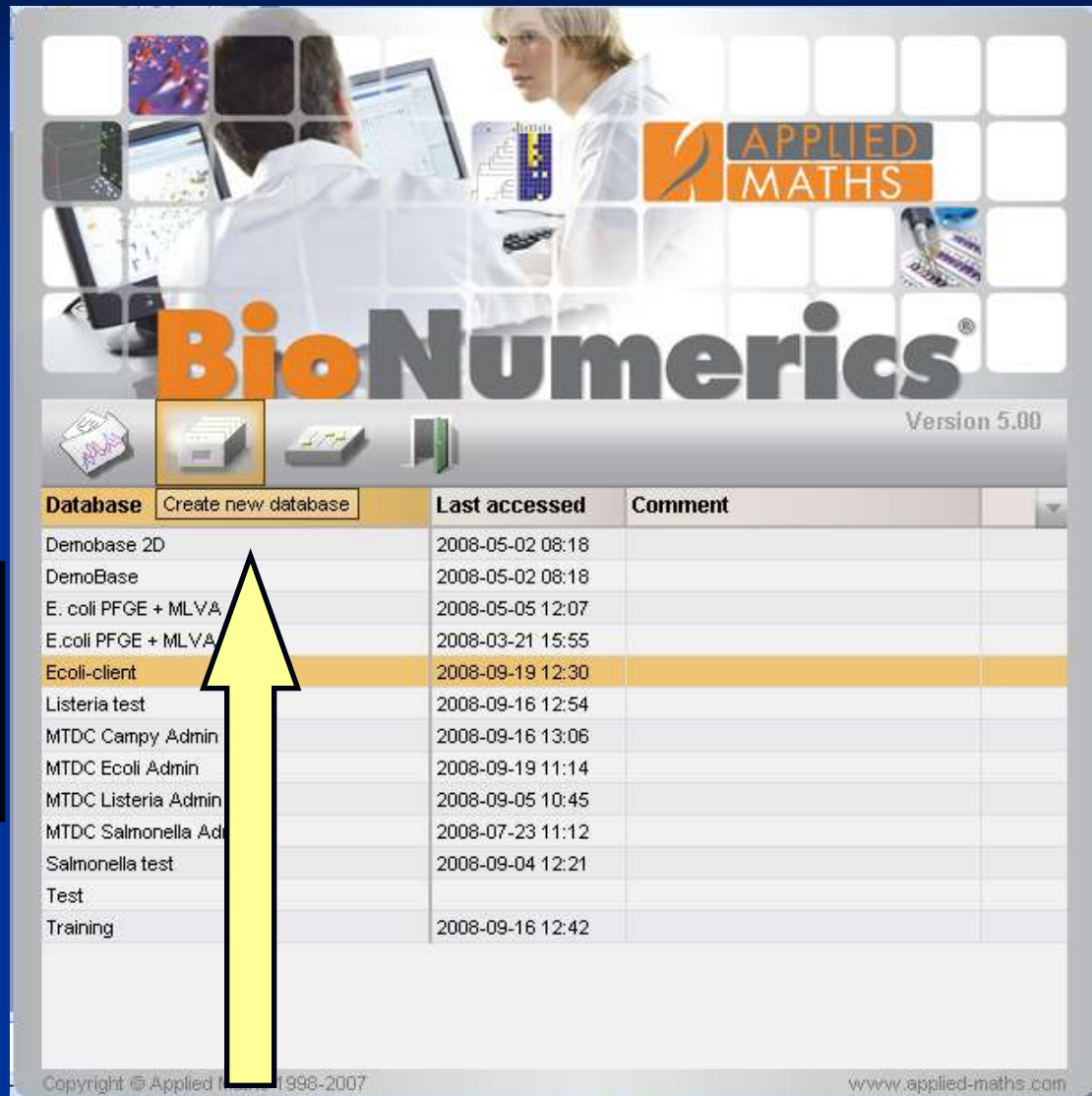
Copyright © Applied Maths 1998-2008  
applied-maths.com

Double click on the BioNumerics shortcut

BioNumerics Startup Screen

# Create a New PulseNet Database

Click “Create new database” to set up a new database



The screenshot shows the BioNumerics software interface. At the top, there is a banner with the text "APPLIED MATHS" and "BioNumerics®". Below the banner, there is a navigation bar with several icons, including a folder icon, a printer icon, and a server icon. The "Create new database" button is highlighted in yellow. Below the navigation bar is a table with the following columns: Database, Last accessed, and Comment. The table contains the following data:

Database	Last accessed	Comment
Demobase 2D	2008-05-02 08:18	
DemoBase	2008-05-02 08:18	
E. coli PFGE + MLVA	2008-05-05 12:07	
E.coli PFGE + MLVA	2008-03-21 15:55	
Ecoli-client	2008-09-19 12:30	
Listeria test	2008-09-16 12:54	
MTDC Campy Admin	2008-09-16 13:06	
MTDC Ecoli Admin	2008-09-19 11:14	
MTDC Listeria Admin	2008-09-05 10:45	
MTDC Salmonella Ad	2008-07-23 11:12	
Salmonella test	2008-09-04 12:21	
Test		
Training	2008-09-16 12:42	

A yellow arrow points to the "Create new database" button. The interface also includes a "Version 5.00" label in the top right corner.



# Create a New PulseNet Database

Type in the name for your new database: Ecoli

New database

This wizard will help you create a new database. Fill in a name for the database and click Next.

Database name:

Ecoli

< Back   Next >   Cancel

Click "Next"

# Create a New PulseNet Database

•Select the default directory

•Keep the default at “Yes”

New database

The database will be installed in the following directory. You can enter another location if you want. Press 'Browse' if you want to specify a different, existing location.

Database directory:

Do you want to automatically create the required directories?

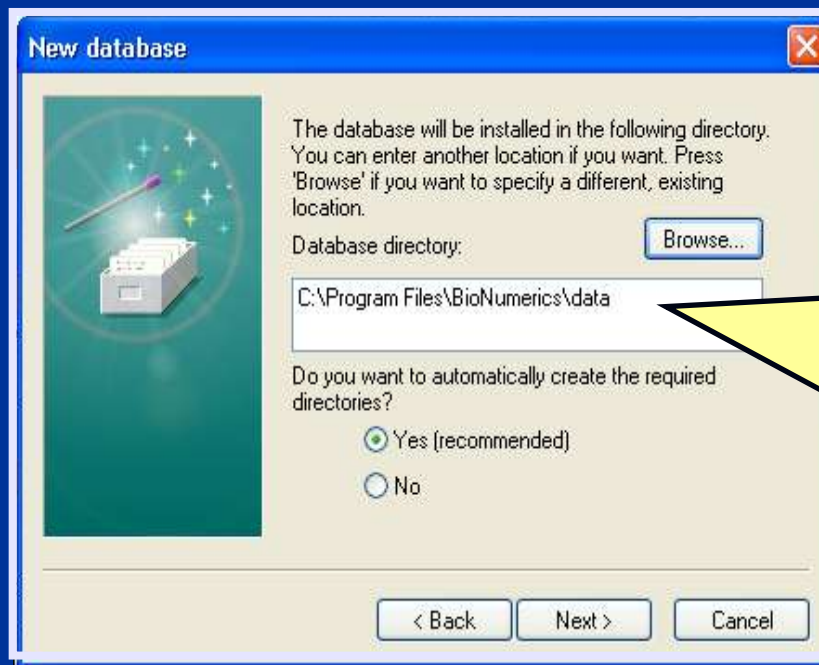
Yes (recommended)  
 No

< Back    Next >    Cancel

Click “Next”

# Create a New PulseNet Database

- **VERY IMPORTANT:** Browse allows you to change the location of your database and database files – do not do this if your lab has an established database
  - > You must add **\\database name** in order to create a folder for that specific database, otherwise you risk rewriting old files when a new database is created in the same location



- Add **\\database name** directly to the end of the listed location

# Create a New PulseNet Database

Change to "Yes"

New database

Do you want to enable the creation of log files?

Yes  
 No

If you select "Yes", the system will automatically write the history of each database component in a log file.

< Back Finish Cancel

Click "Finish"

# Create a New PulseNet Database

Change to  
“Local database”

Setup new database

Database type:

- New connected database (automatically created)
- New connected database (custom created)
- Existing connected database
- Local database (single user only)

ODBC connection string:

Database type

- Access®
- SQL Server®
- Oracle®

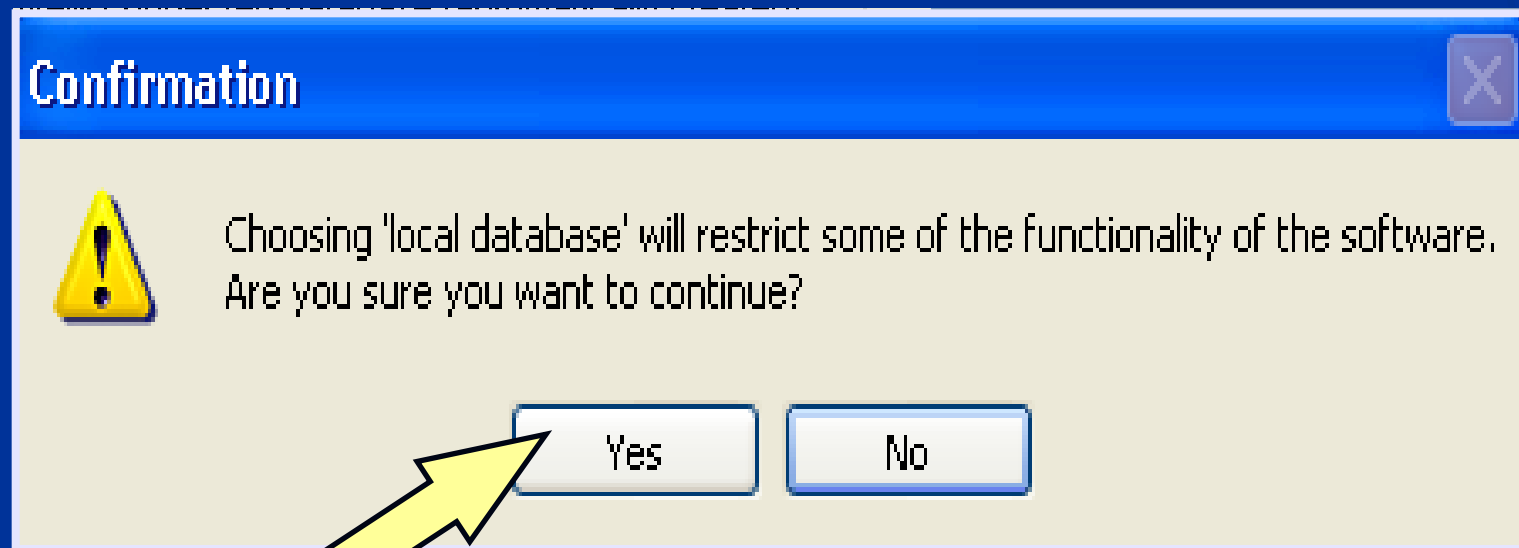
Store fingerprints in database

Click “Proceed”



# Create a New PulseNet Database

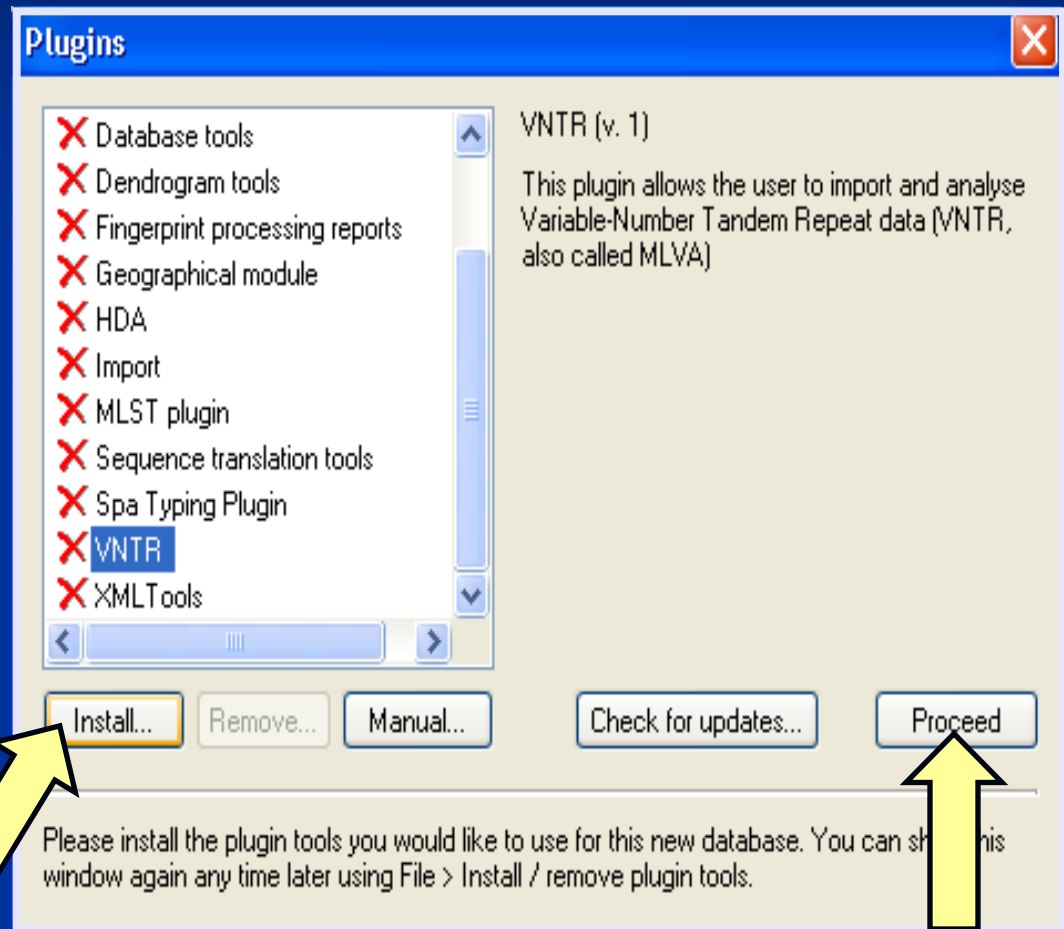
When you choose “Local database,” a confirmation window will appear. Click “yes” to continue



# Create a New PulseNet Database

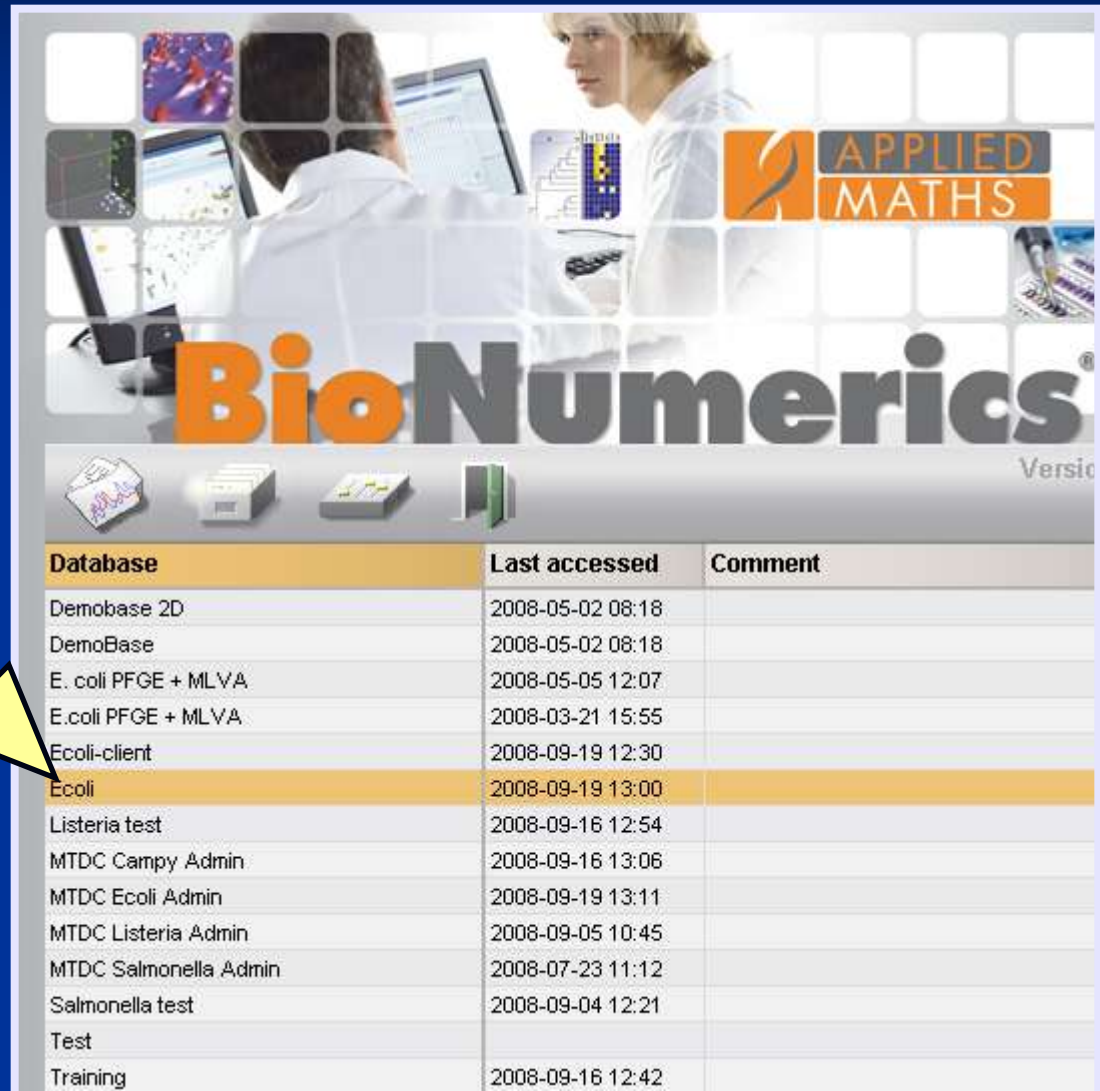
Plug-ins offer additional functionality, such as importing and exporting various types of data

You can add a plugin later after installing MasterScripts



# Create a New PulseNet Database

Note that your newly created database is present



The screenshot displays the BioNumerics software interface. At the top, there is a header with the 'APPLIED MATHS' logo and the 'BioNumerics' brand name. Below the header, a table lists various databases. The 'Ecoli' database is highlighted in yellow, indicating it is the newly created database mentioned in the text box. The table columns are 'Database', 'Last accessed', and 'Comment'.

Database	Last accessed	Comment
Demobase 2D	2008-05-02 08:18	
DemoBase	2008-05-02 08:18	
E. coli PFGE + MLVA	2008-05-05 12:07	
E.coli PFGE + MLVA	2008-03-21 15:55	
Ecoli-client	2008-09-19 12:30	
<b>Ecoli</b>	<b>2008-09-19 13:00</b>	
Listeria test	2008-09-16 12:54	
MTDC Campy Admin	2008-09-16 13:06	
MTDC Ecoli Admin	2008-09-19 13:11	
MTDC Listeria Admin	2008-09-05 10:45	
MTDC Salmonella Admin	2008-07-23 11:12	
Salmonella test	2008-09-04 12:21	
Test		
Training	2008-09-16 12:42	

# Install PulseNet MasterScripts

Either Double-click on your newly created database or click “Open database for analysis”

APPLIED MATHS

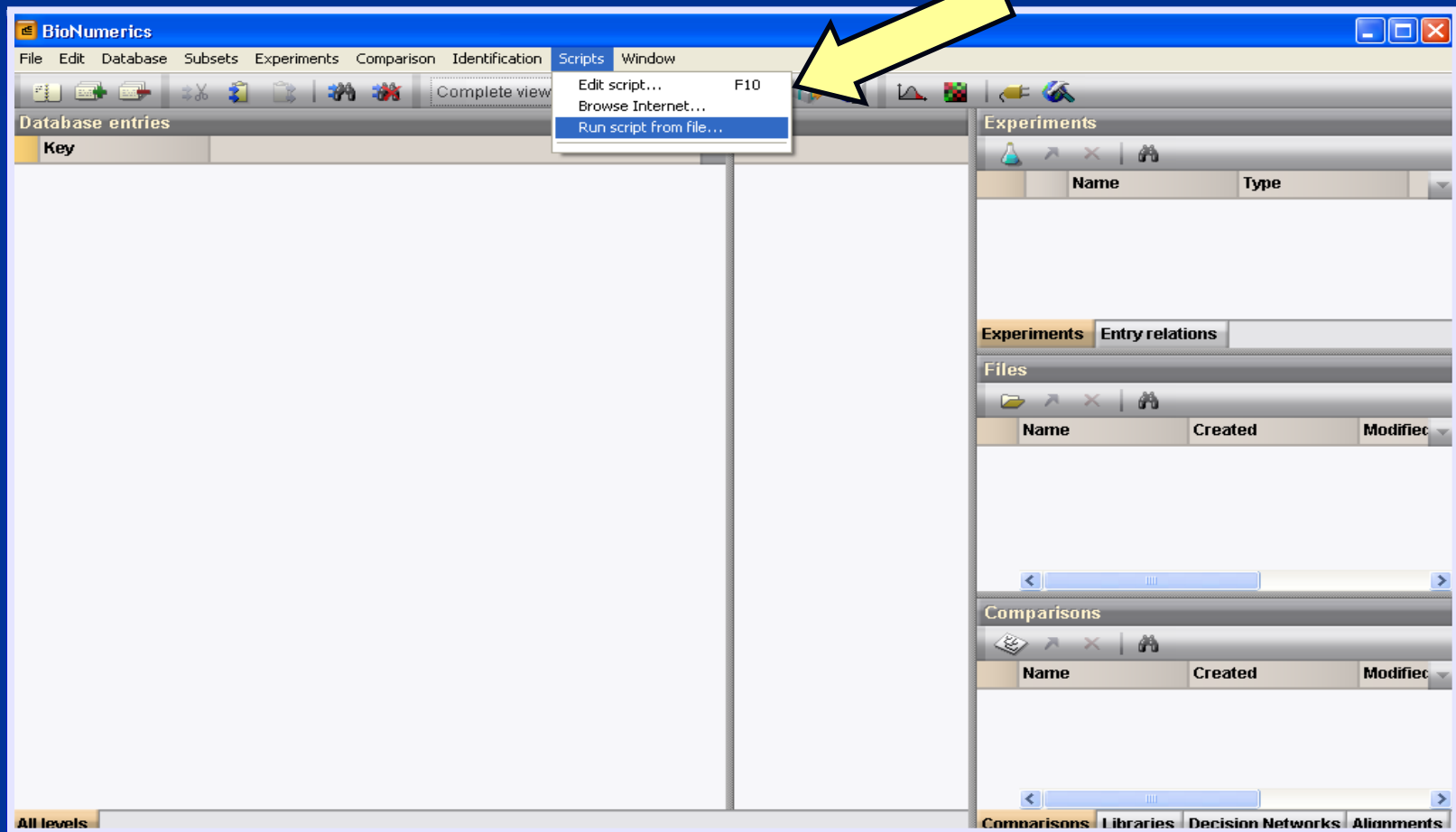
BioNumerics®

Version 5.00

Open database for analysis	Last accessed	Comment
Demobase 2D	2008-05-02 08:18	
DemoBase	2008-05-02 08:18	
E. coli PFGE + MLVA	2008-05-05 12:07	
E.coli PFGE + MLVA	2008-03-21 15:55	
Ecoli-client	2008-09-19 12:30	
<b>Ecoli</b>	<b>2008-09-19 13:23</b>	
Listeria test	2008-09-16 12:54	
MTDC Campy Admin	2008-09-16 13:06	
MTDC Ecoli Admin	2008-09-19 13:11	
MTDC Listeria Admin	2008-09-05 10:45	
MTDC Salmonella Admin	2008-07-23 11:12	
Salmonella test	2008-09-04 12:21	
Test		
Training	2008-09-16 12:42	

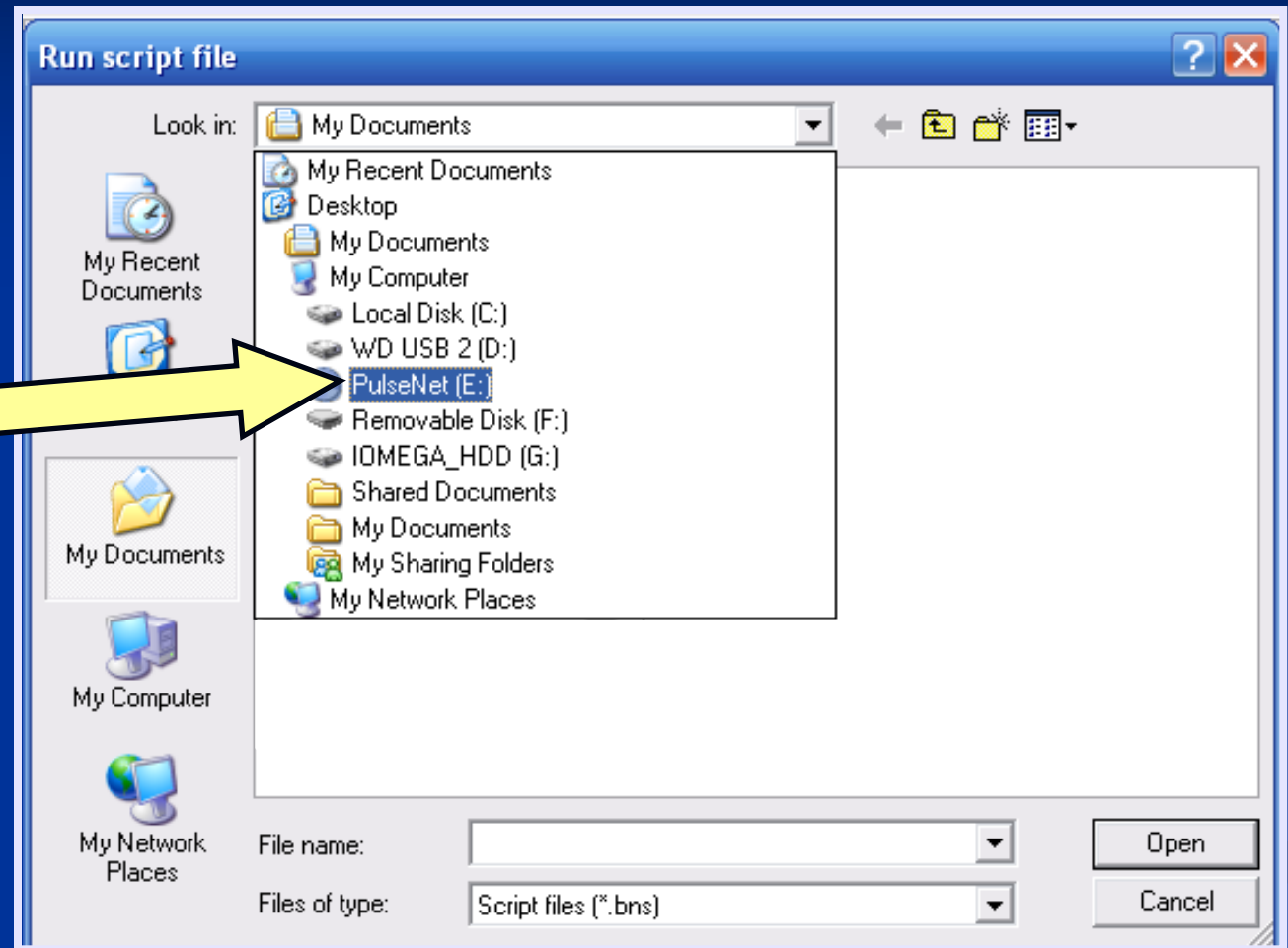
# Install PulseNet MasterScripts

In the upper toolbar click “Scripts” and select “Run script from file...”



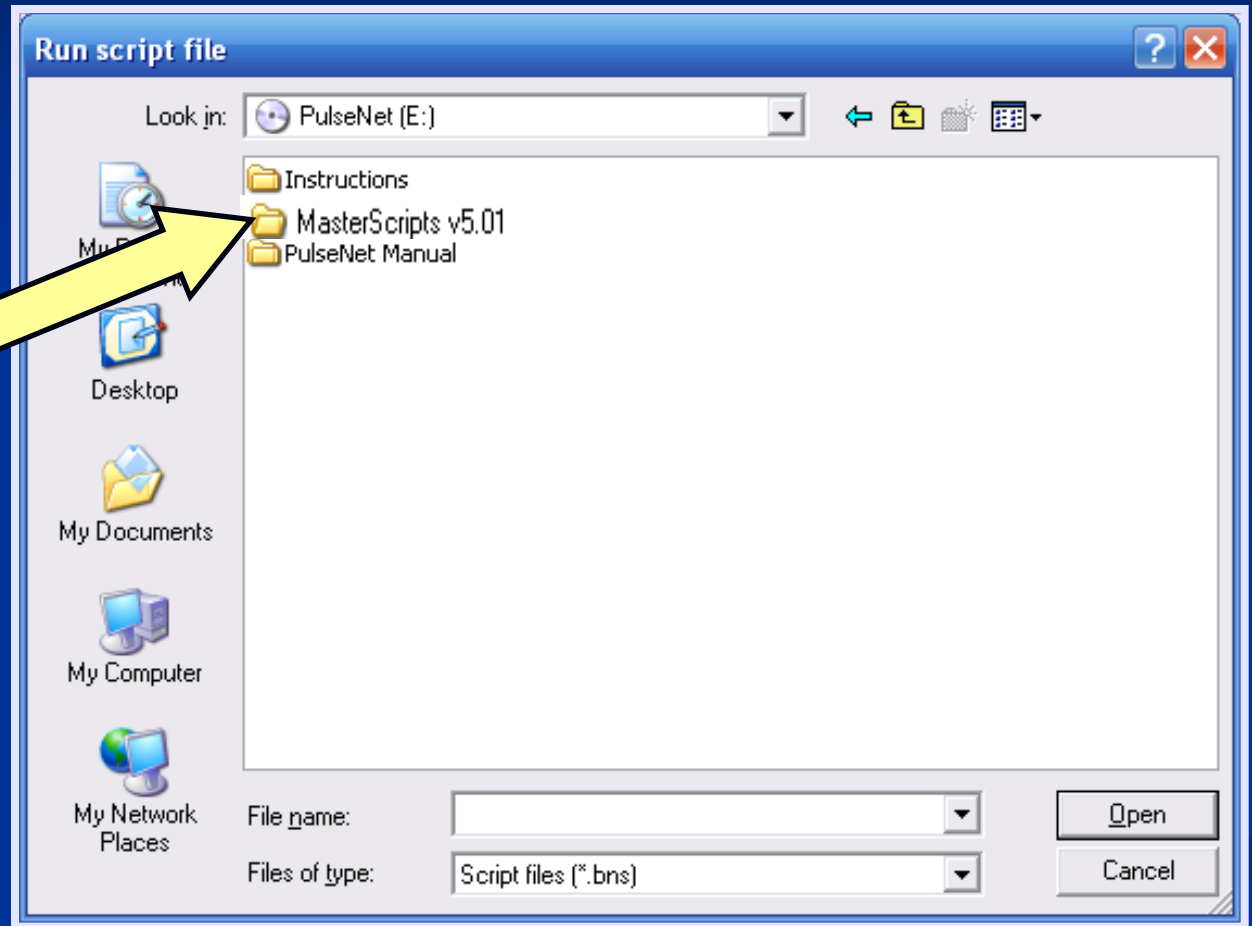
# Install PulseNet MasterScripts

Navigate to  
the provided  
BioNumerics  
CD



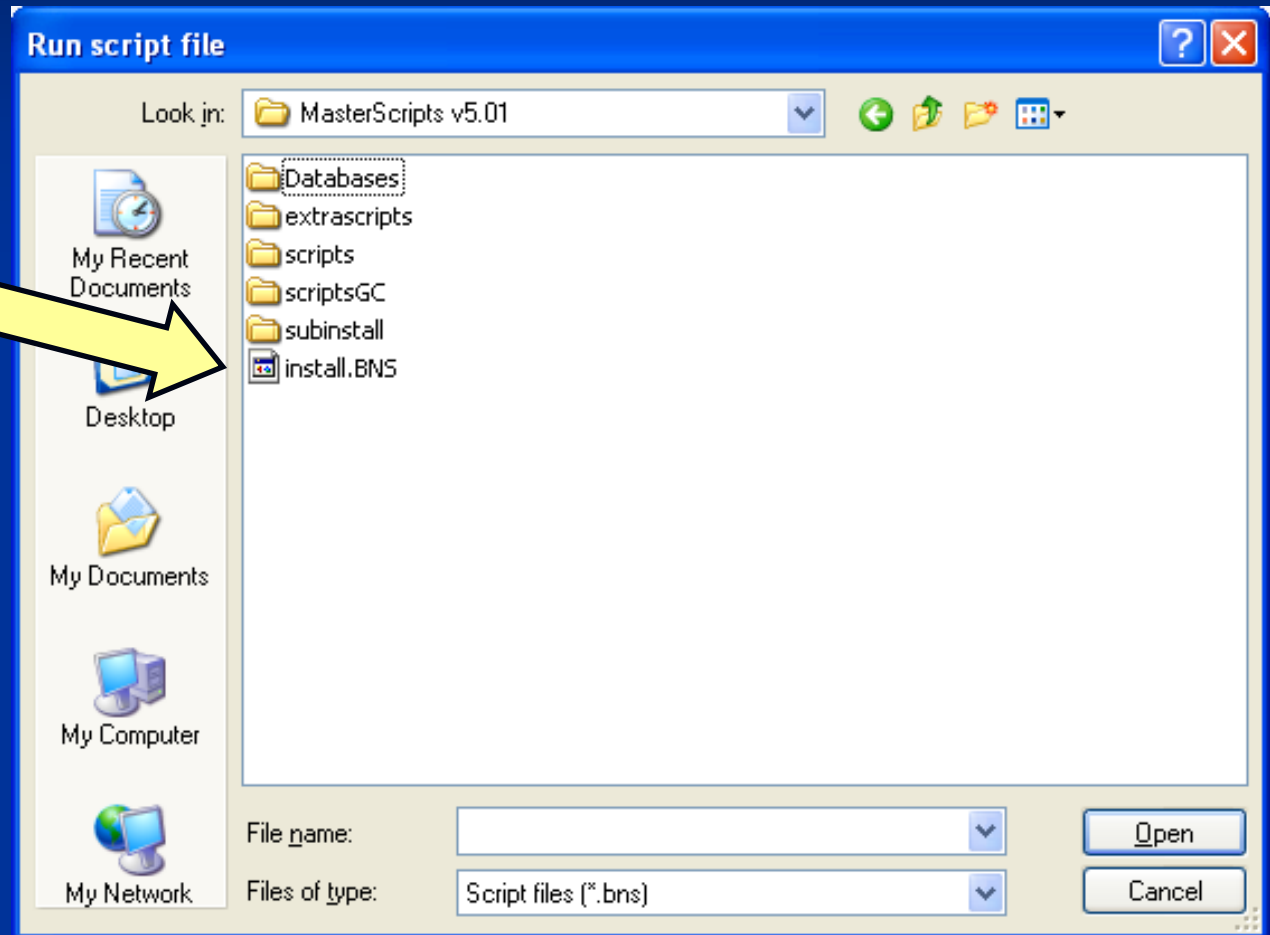
# Install PulseNet MasterScripts

**Double-click  
'MasterScripts  
v5.01' folder on  
the CD**



# Install PulseNet MasterScripts

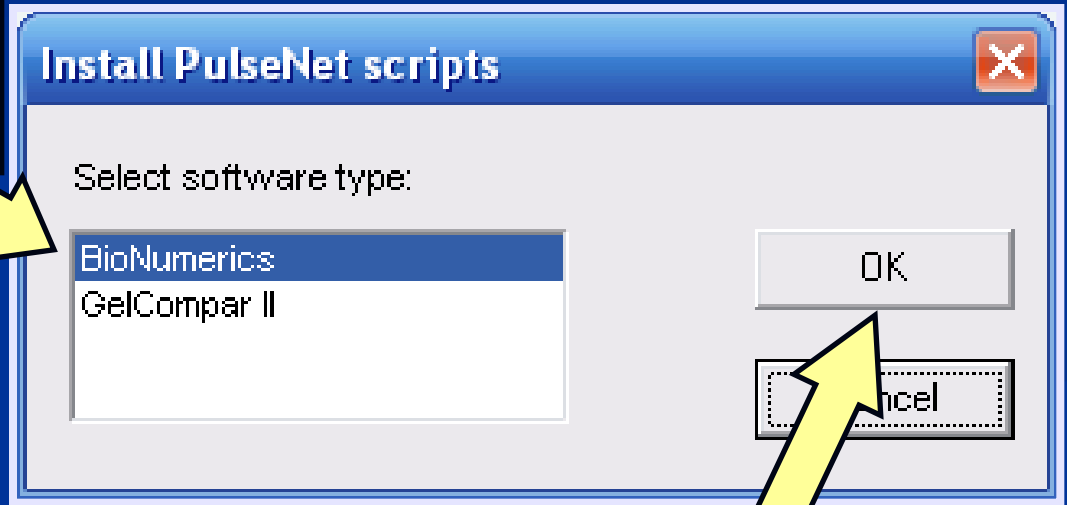
Double click  
“install.bns”





# Install PulseNet MasterScripts

Leave default at BioNumerics



Click "OK"

# Install PulseNet MasterScripts

**Select Organism**

**Enter your Lab ID:**

- For training, use LabID provided in class

**Install PulseNet scripts**

This script will install the pre-defined experiments and scripts for a PulseNet database

Select the organism:

- Ecoli
- Salmonella
- Listeria
- Shigella
- Campylobacter
- Ypestis
- Vcholerae

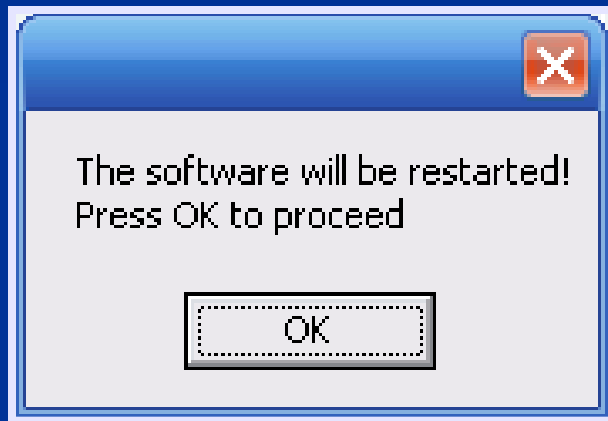
Enter the Lab ID for your site (if you don't know this, you can contact the PulseNet administration team)

CDC

OK

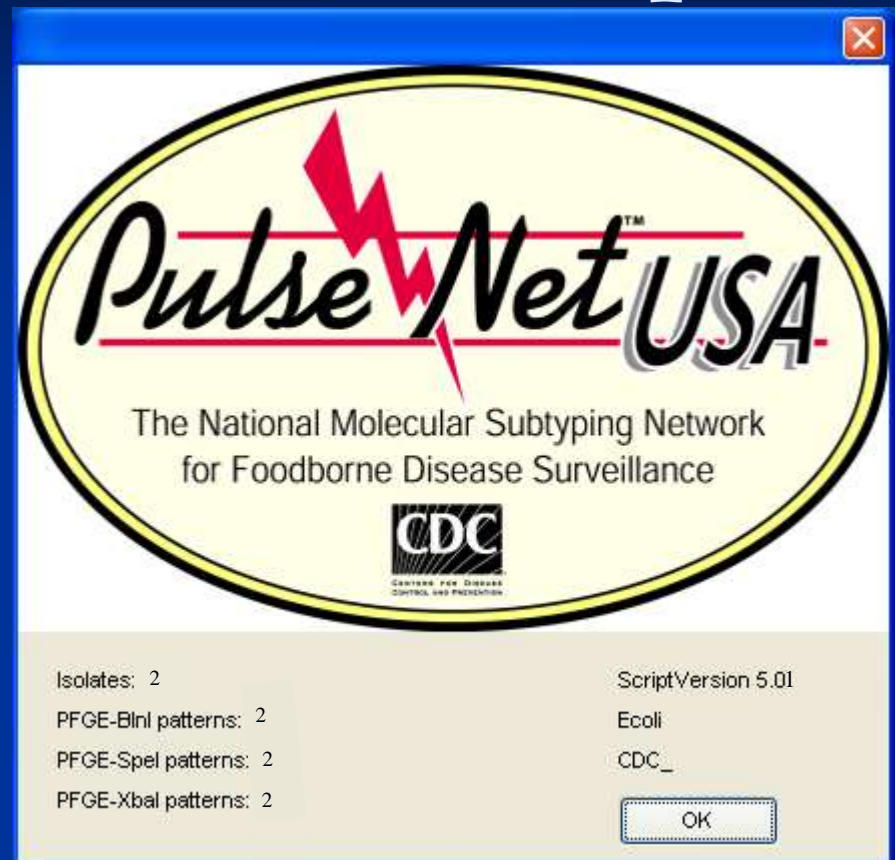
Cancel

# Install PulseNet MasterScripts



**The program will ask to be restarted, click OK.**

**Installation is complete!**



**You are at the start up screen of your new database.**

# Questions?



**Thank you for your attention**

The findings and conclusions in this presentation are those of the author and do not necessarily represent the views of the Centers for Disease Control and Prevention



# Demo: Create Databases/Install PulseNet MasterScripts

**We will do the following:**

- Create an *E. coli* database (Name database with initials at end. Ex: Ecoli-LT) and a *Listeria* database
- Install PulseNet MasterScripts in the *E. coli* and *Listeria* databases
- Turn on/off fields (index, location) in each database

