

Creation and File Location of PulseNet Bundle Files



Angie Dixon
May 2009



Overview

- Create a PulseNet Bundle File
- Open a Bundle File
- Bundle File Information Options
- Select Entries from Bundle Files

Create a PulseNet Bundle File

| Index | Key | LabID |
|-------|----------------|-------|
| 1 | 00ST1496 | MI |
| 2 | 00ST1534 | MI |
| 3 | 03X03705 | CA__ |
| 4 | 03X04255 | CA__ |
| 5 | 04_BAC_161 | VT |
| 6 | 402282 | IL |
| 7 | 402327 | IL |
| 8 | 402392 | IL |
| 9 | 402489 | IL |
| 10 | 402557 | IL |
| 11 | 7149 | VM__ |
| 12 | 7319 | VM__ |
| 13 | AK__0727100185 | AK__ |
| 14 | AK__0735500052 | AK__ |
| 15 | AK__0810100227 | AK__ |
| 16 | AK__0814900191 | AK__ |
| 17 | AK__0818900193 | AK__ |
| 18 | AK__0818900194 | AK__ |
| 19 | AK__0819000130 | AK__ |
| 20 | AK__0819100201 | AK__ |
| 21 | AK__0819900104 | AK__ |

1

Select entries to be saved in bundle*:

-Ctrl + left-click

-Shift + left-click

-Left click + space bar

****Be sure to check included experiments**

Select fields to include:

- LabID
- SourceCountry
- SourceState
- SourceCounty
- SourceCity
- SourceSite
- SourceType
- TypeDetails
- OtherStateIsolate
- PatientAge
- PatientSex
- IsolatDate
- ReceivedDate
- UploadDate
- UploadModifiedDate
- Serotype
- Outbreak
- cdc_id

Select experiments to include:

- PFGE-Xbal
- PFGE-BlnI
- PFGE-Spel
- Antibio
- Biochem

File name: test

OK Cancel

3

Name the bundle according to the PulseNet guidelines

2

Click "create PulseNet bundle" icon

| Index | Key | LabID |
|-------|----------------|-------|
| 18 | AK__0818900194 | AK__ |
| 19 | AK__0819000130 | AK__ |
| 20 | AK__0819100201 | AK__ |
| 21 | AK__0819900104 | AK__ |
| 22 | AK__0820300209 | AK__ |
| 23 | AK__0822600090 | AK__ |

*Entries can also be selected by running a query

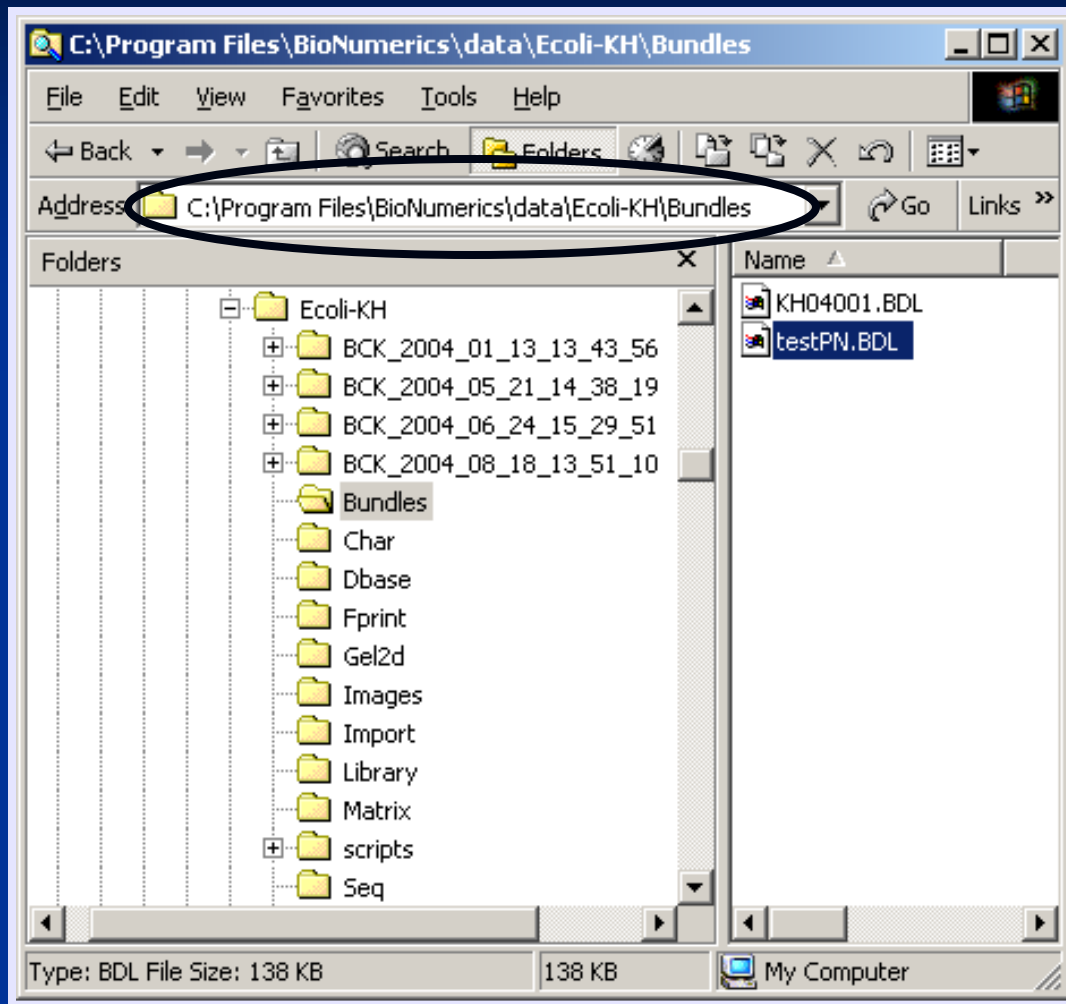
Create a PulseNet Bundle File

- PulseNet guidelines for naming a bundle file
 - Sample Bundle name: **LAC09001.bdl**
This is the *first bundle* sent from **LA county** during 2009
 - Bundle numbers should increase with each one created, regardless of which database they are made for

Overview

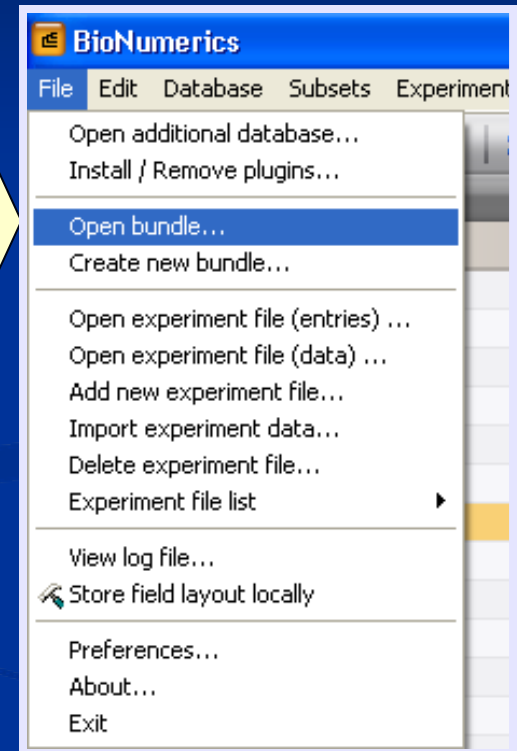
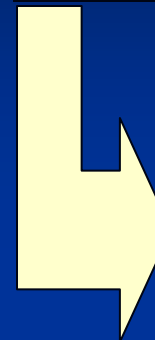
- Create a PulseNet Bundle File
- Open a Bundle File
- Bundle File Information Options
- Select Entries from Bundle Files

Open a Bundle File



Bundle Location

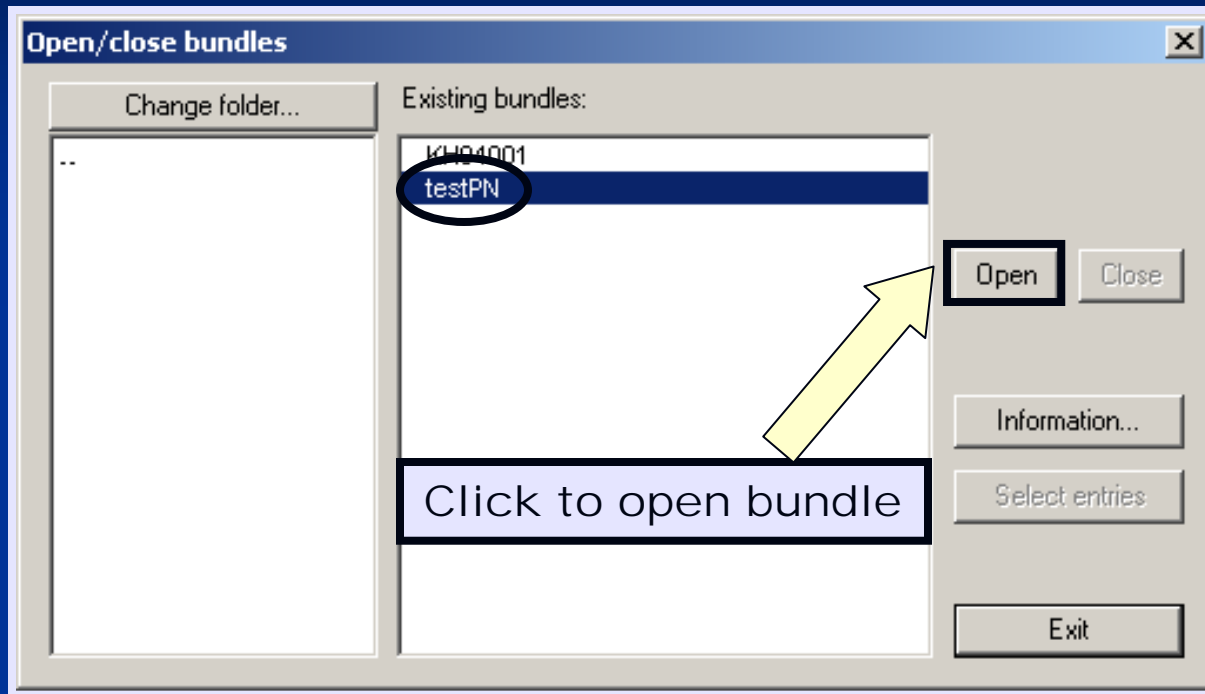
Opening



OR

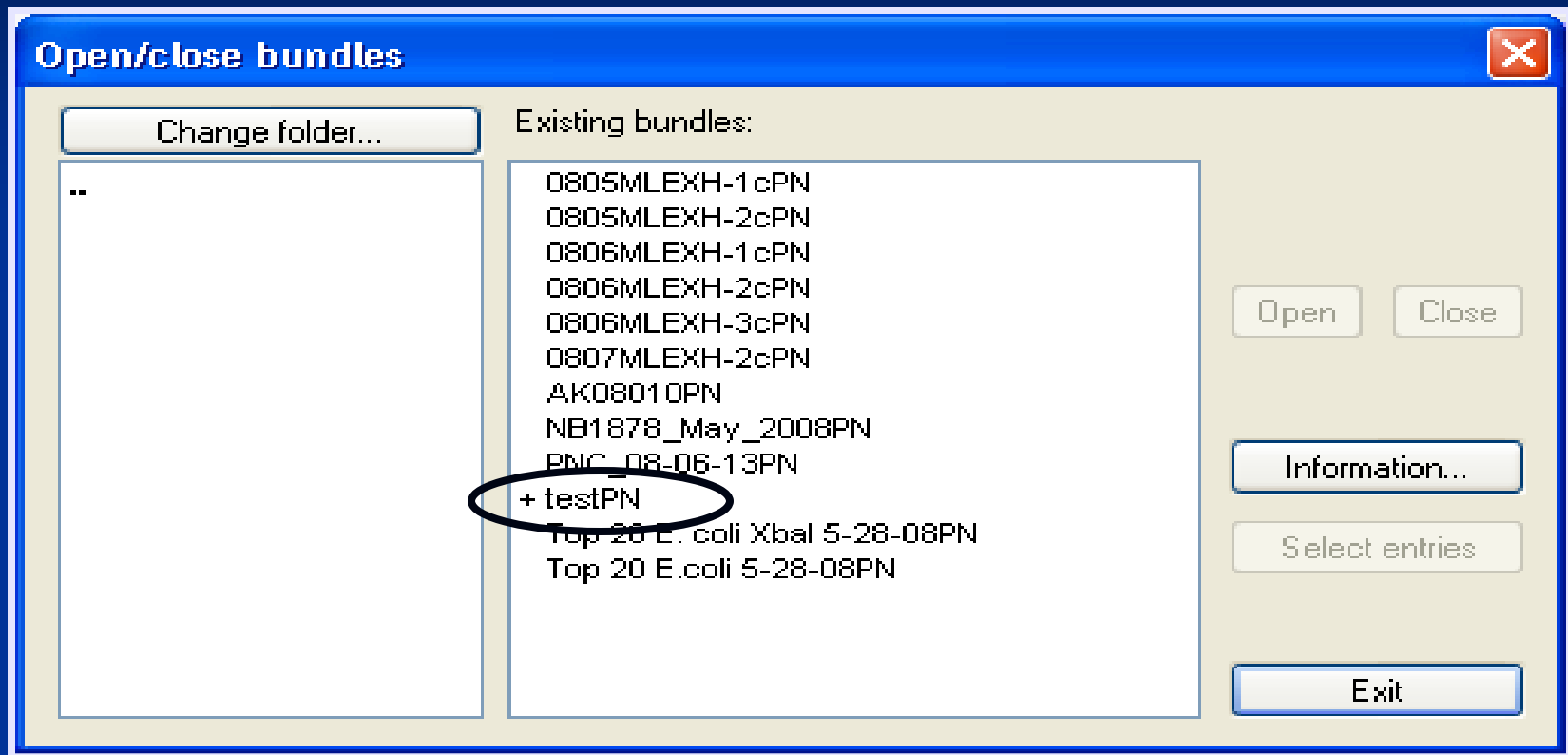


Open a Bundle File



**Notice the
'PN' added
to the end
of the file
name**

Open a Bundle File

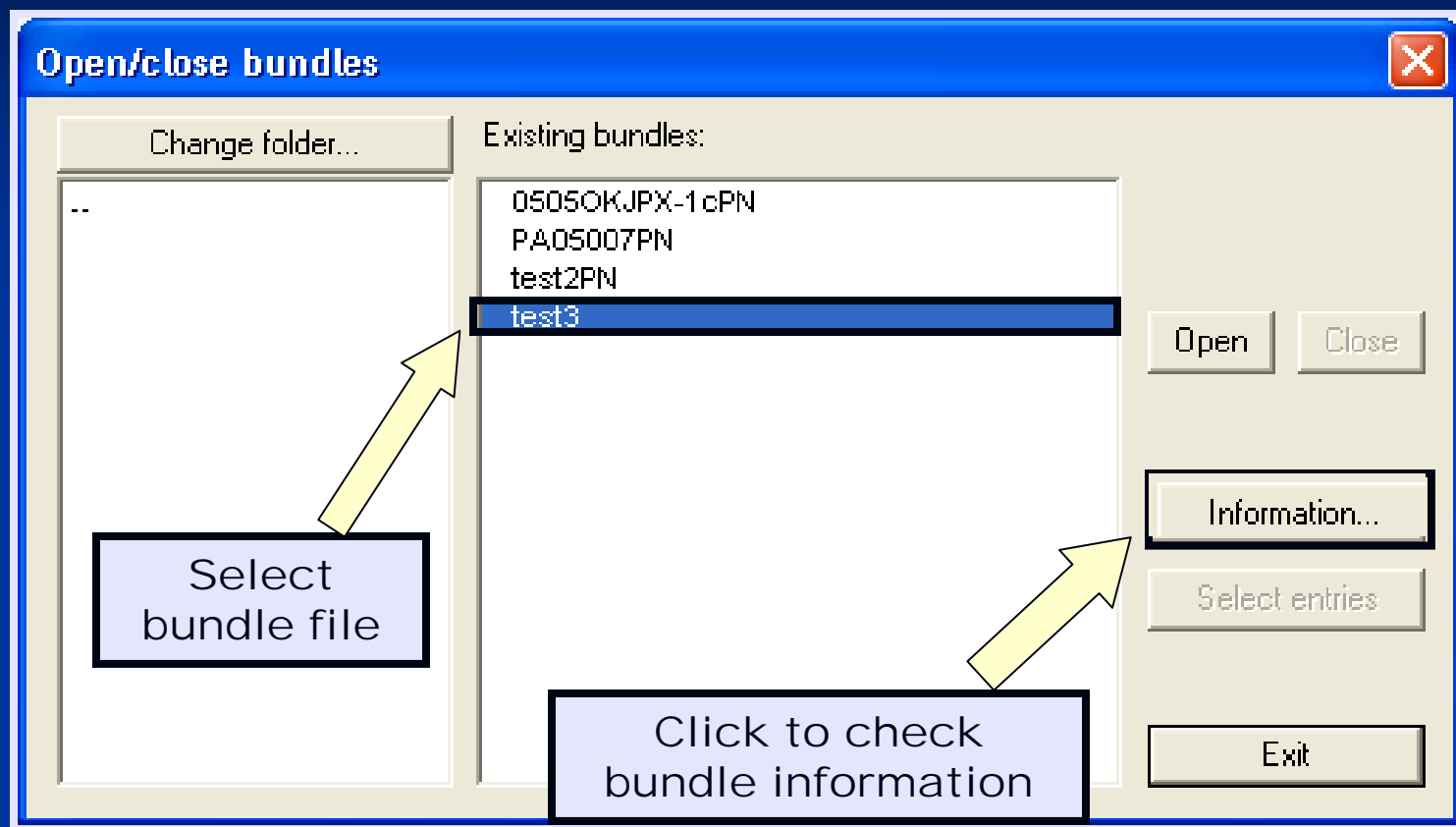


Notice the '+' sign added to the front of the file name? This means that the bundle file is open.

Overview

- Create a PulseNet Bundle File
- Open a Bundle File
- Bundle File Information Options
- Select Entries from Bundle Files

Bundle File Information Options



Recommendation: ALWAYS check a bundle file's information before opening it. If it has extraneous fields, request a PulseNet bundle from the person from which you received the bundle file.

Bundle File Information Options

This box tells you how many entries are in the bundle file

You will notice that the fields and experiments contained in the bundle file that are NOT in your database have a red dot by them

test 3

Number of entries in bundle: 5 Exit

Database fields:

- PFGE-Spel-pattern
- PFGE-Spel-rundate
- PFGE-Spel-status
- TypeDetails
- DebSheehan's Pattern
- AdditionalComment
- Pattern
- Source
- Number
- Geographic

Experiments:

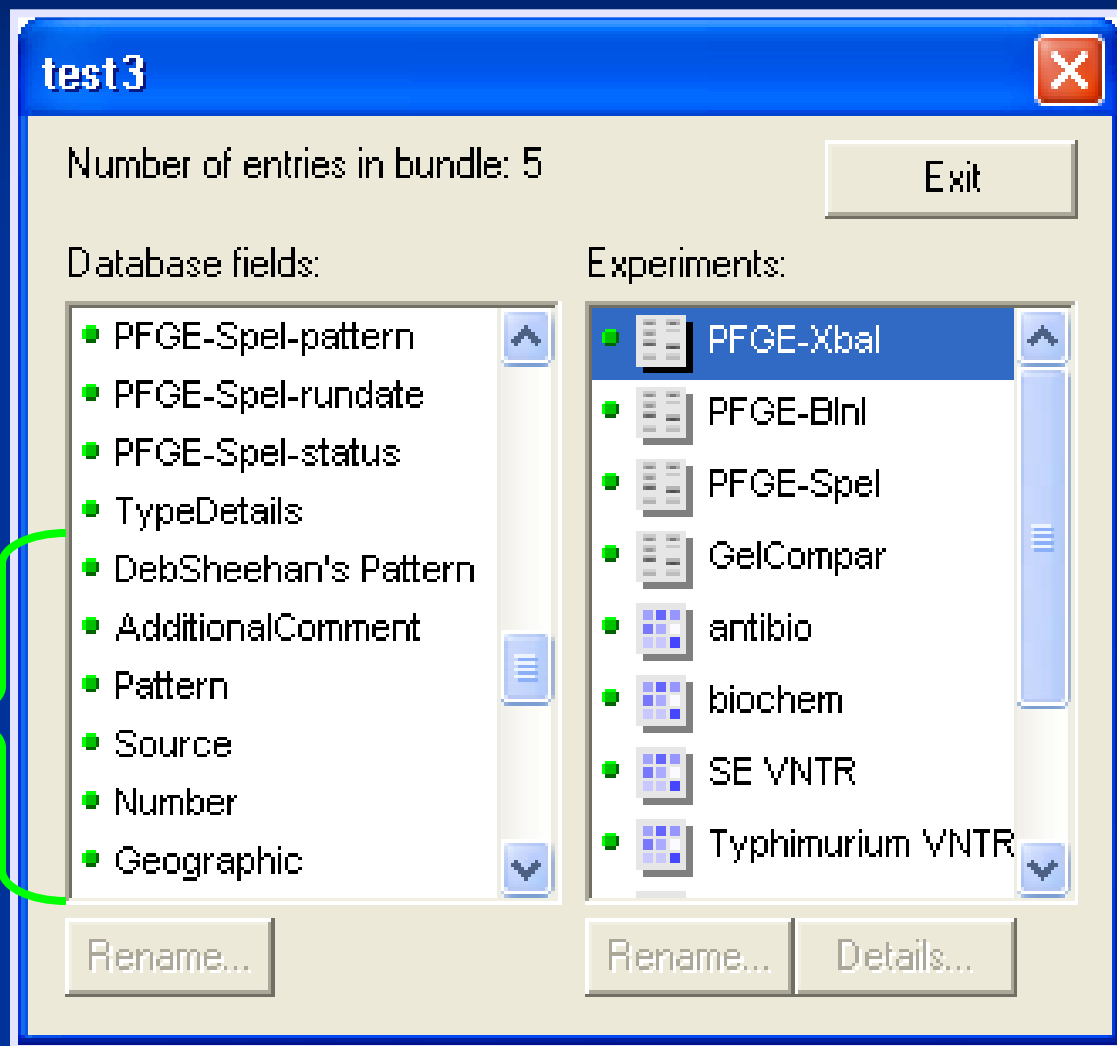
- PFGE-Xbal
- PFGE-BlnI
- PFGE-Spel
- GelCompar
- antibio
- biochem
- SE VNTR
- Typhimurium VNTR

Rename... Rename... Details...

Bundle File Information Options

If you decide to go ahead and open the non-PulseNet bundle anyway, the red dots will then be green the next time you look at the information.

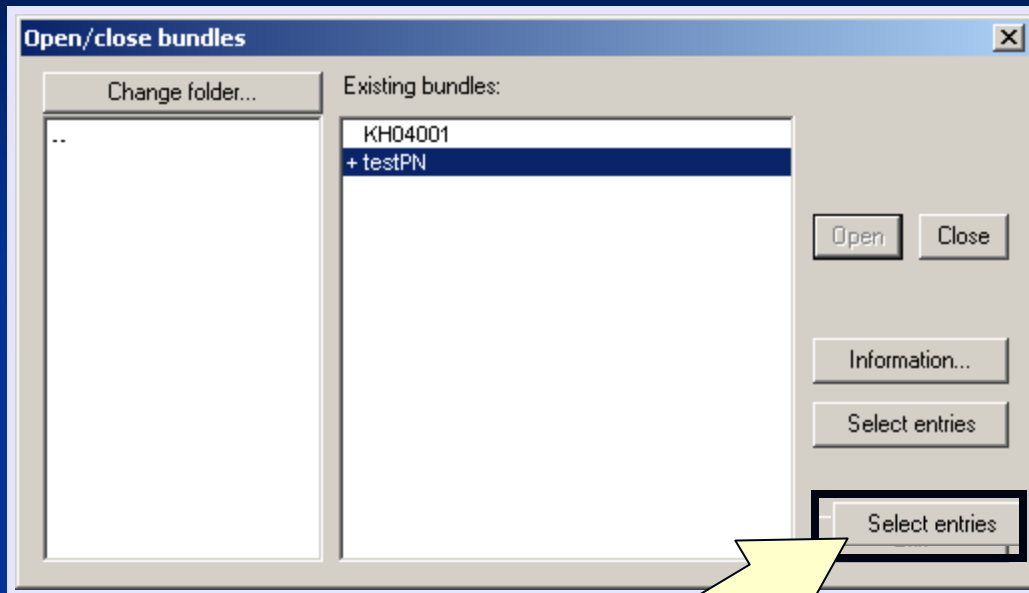
This is because these fields and experiments have now been added to your database.



Overview

- Create a PulseNet Bundle File
- Open a Bundle File
- Bundle File Information Options
- Select Entries from Bundle Files

Select Entries from Bundle Files



Once opened,
click “Select
entries”

BioNumerics

File Edit Database Subsets Experiments Comparison Identification F

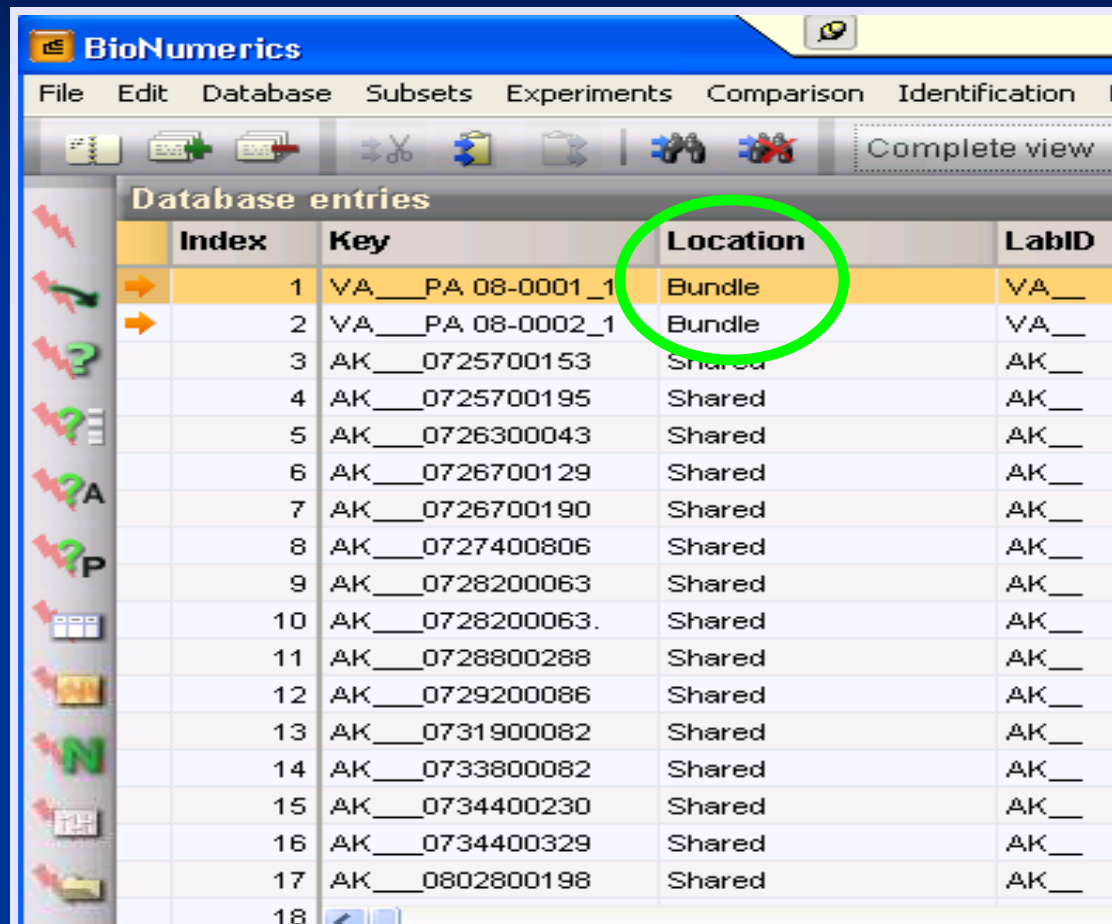
Database entries

| Index | Key | Location | LabID |
|-------|------------------|----------|-------|
| 1 | VA__PA.08-0001_1 | Bundle | VA__ |
| 2 | VA__PA.08-0002_1 | Bundle | VA__ |
| 3 | AK__0725700153 | Shared | AK__ |
| 4 | AK__0726700105 | Shared | AK__ |
| 5 | AK__0726300043 | Shared | AK__ |
| 6 | AK__0726700129 | Shared | AK__ |
| 7 | AK__0726700190 | Shared | AK__ |
| 8 | AK__0727400806 | Shared | AK__ |
| 9 | AK__0728200063 | Shared | AK__ |
| 10 | AK__0728200063. | Shared | AK__ |
| 11 | AK__0728800288 | Shared | AK__ |
| 12 | AK__0729200086 | Shared | AK__ |
| 13 | AK__0731900082 | Shared | AK__ |
| 14 | AK__0733800082 | Shared | AK__ |
| 15 | AK__0734400230 | Shared | AK__ |
| 16 | AK__0734400329 | Shared | AK__ |
| 17 | AK__0802800198 | Shared | AK__ |
| 18 | | | |

Selected entries are
isolates in the
bundle

Also by turning on your Location field in BioNumerics, it will identify isolates that are included in a bundle by saying “bundle” or “shared.”

Select Entries from Bundle Files



The screenshot shows the BioNumerics software interface. The main window displays a table titled "Database entries" with the following columns: Index, Key, Location, and LabID. The first two rows are highlighted in yellow, and the "Location" column for these rows is circled in green. The table contains 18 rows of data, with the first two rows representing bundle entries.

| Index | Key | Location | LabID |
|-------|------------------|----------|-------|
| 1 | VA__PA 08-0001_1 | Bundle | VA__ |
| 2 | VA__PA 08-0002_1 | Bundle | VA__ |
| 3 | AK__0725700153 | Shared | AK__ |
| 4 | AK__0725700195 | Shared | AK__ |
| 5 | AK__0726300043 | Shared | AK__ |
| 6 | AK__0726700129 | Shared | AK__ |
| 7 | AK__0726700190 | Shared | AK__ |
| 8 | AK__0727400806 | Shared | AK__ |
| 9 | AK__0728200063 | Shared | AK__ |
| 10 | AK__0728200063 | Shared | AK__ |
| 11 | AK__0728800288 | Shared | AK__ |
| 12 | AK__0729200086 | Shared | AK__ |
| 13 | AK__0731900082 | Shared | AK__ |
| 14 | AK__0733800082 | Shared | AK__ |
| 15 | AK__0734400230 | Shared | AK__ |
| 16 | AK__0734400329 | Shared | AK__ |
| 17 | AK__0802800198 | Shared | AK__ |
| 18 | | | |

By turning on your Location field in BioNumerics, it will identify isolates that are included in a bundle by saying "Bundle"

Summary

- Created a PulseNet Bundle File
- Opened a Bundle File
- Bundle File Information Options
- Selected Entries from Bundle Files

Questions?



Thank you for your attention

The findings and conclusions in this presentation are those of the author and do not necessarily represent the views of the Centers for Disease Control and Prevention